



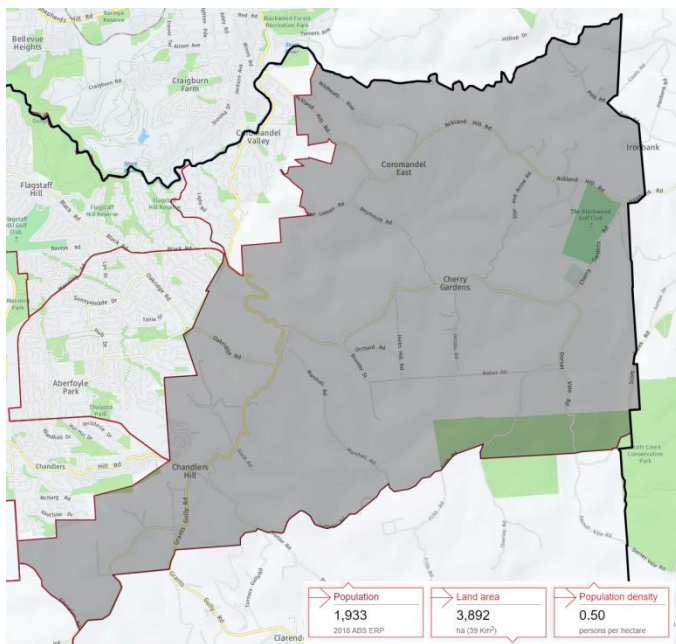
Incorporated by the Cherry Gardens Community Association Inc.

## LETTER TO THE EDITOR

### BOUNDARY CHANGE PROPOSAL AND DISCUSSION

Many will have read in the Advertiser recently regarding the potential boundary changes being discussed amongst City of Holdfast Bay and Marion Council. This has occurred because on 1 January 2019, the South Australian Local Government Boundaries Commission was formed, as the independent body that assesses and investigates council boundary change proposals, and makes recommendations to the Minister.

What you may not have known is that this process can be initiated by a request from just 10% of the affected residents. According to Australian Bureau of Statistics in 2018 the community of Coromandel East - Cherry Gardens - Chandlers Hill - Ironbank had 1,933 residents.



Map of Cherry Gardens, Ironbank, Coromandel East, Chandlers Hill

Why would we as a community want to move from Onkaparinga to say Adelaide Hills?

**Objectively**, there are at least three reasons. Firstly, the **average rates are around \$257 less pa** (based on an average house price of \$812,000). Secondly, **Adelaide Hills is much closer to us**. The Adelaide Hills community centre is at Stirling, 16 km from the CFS shed compared to Noarlunga Civic Centre which is 22km away. Closer makes accessing council easier. Thirdly, we currently receive around **one quarter the representation** that Adelaide Hills Council residents enjoy. After reducing its councillors from 20 to 12 in 2018, Onkaparinga's Thalassa Ward has a ratio of councillors to residents of 1:9,899. The Adelaide Hills Council has an average representation ratio of 1:2,396.

The LOCAL GOVERNMENT ACT 1999 - SECT 26 sets out criteria that include

(ii) proposed changes should, wherever practicable, benefit ratepayers; [See savings estimate of \$257 pa for the average resident]

and

(v) a council should facilitate effective planning and development within an area and be constituted with respect to an area that can be promoted on a coherent basis; [The word "coherent" is interesting given that that the suburb profile of Onkaparinga is anything but coherent. We are nothing like the high density suburbs of Reynella, Morphett Vale, Christies Beach or Sellicks - yet are under the same planning area.]

and

(vii) a council should reflect communities of interest of an economic, recreational, social, regional or other kind, and be consistent with community structures, values, expectations and aspirations; [The Onkaparinga Elector Representation Review only talks about "established suburbs", which arguably misses the point of this criteria entirely.]

and

viii) a council area should incorporate or promote an accessible centre (or centres) for local administration and services; [We are much closer to Stirling than Noarlunga]

and

(xi) residents should receive adequate and fair representation within the local government system, [Currently we receive around one quarter the representation that Adelaide Hills Council residents enjoy. Higher rates, but far less representation ...]

So, where to from here? To bring community attention to the issue and to see if there is any interest in exploring this further, perhaps with a community meeting at the Hall - I've set up an online petition on [change.org](http://change.org) at <http://bit.ly/Cherry2AHC>  
I look forward to discussing this with my friends and neighbours! regards, Darren Kruse

Sources are all available online

- SA Gov Changes to council boundaries ; [https://www.dpti.sa.gov.au/local\\_govt/boundary\\_changes](https://www.dpti.sa.gov.au/local_govt/boundary_changes)
- Map and ABS data for community of Coromandel East - Cherry Gardens - Chandlers Hill - Ironbank <https://profile.id.com.au/ONKAPARINGA/about?WebID=160>
- Onkaparinga Elector Representation Review ; <https://yoursay.onkaparinga.sa.gov.au/elector-representation-review>
- Adelaide Hills Elector Representation Review ; <https://engage.ahc.sa.gov.au/elector-representation-review>
- LOCAL GOVERNMENT ACT 1999 [http://www8.austlii.edu.au/cgi-bin/viewdoc/au/legis/sa/consol\\_act/lga1999182/s26.html](http://www8.austlii.edu.au/cgi-bin/viewdoc/au/legis/sa/consol_act/lga1999182/s26.html)
- [Adelaide Hills Rates 2019-2020](#)
- [Onkaparinga Rates 2019-2020](#)

**Editors Comment:** The Cherry Gardens Community Association will be holding a public meeting later in October to give all residents the opportunity to have their say about this proposal. We are contacting both the Onkaparinga and Adelaide Hills councils to ask if they can send a representative to help answer questions. We are also looking to see if there are any other impacts that need to be considered as part of any proposal to change councils such as other fees, costs and support activities that need to be taken into account. Please keep an eye on the Cherry Chatter website [www.cherrychatter.org.au](http://www.cherrychatter.org.au) and facebook sites <https://www.facebook.com/92CherryChatter/notification/s/> for updates and roadside notices will be made available.

### PLEASE TAKE NOTE

Opinions and articles printed in the Cherry Chatter are not necessarily shared by the members of the Cherry Chatter Committee.

NOTE – The Cherry Chatter Committee will not approve any controversial article for publishing unless the name and address of the author is supplied.

## RAINFALL REPORT FOR AUGUST

### Cherry Gardens Rainfall

Rainfall for August 2019	112.6 mm
Rainfall for August 2018	145.8 mm
Average rainfall for August	117.7 mm
Rainfall to the end of August 2019	591.2 mm
Rainfall to the end of August 2018	573.2 mm
Average rainfall to the end of August	658.4 mm

### 2019 CHERRY CHATTER COMMITTEE

Chair	Don Watton
Deputy Chair	Kerry Hughes
Editorial Team	Don Watton, Paul Heck, Vicki Kirss, Emmanuelle Harrington
Secretary	Bev Watton
Treasurer/Ads	Marg Macks <a href="mailto:pmcmacks@bigpond.net.au">pmcmacks@bigpond.net.au</a>
Newsletter	Paul Heck 0410 470 309 Vicki Kirss 0412 364 180

Address: 409 Cherry Gardens Rd, Cherry Gardens SA 5157

Website: [www.cherrychatter.org.au](http://www.cherrychatter.org.au)

CC Email address: [cherrychatter@yahoo.com](mailto:cherrychatter@yahoo.com)

### NEXT CC MEETING

7.30pm Tuesday 8<sup>th</sup> October at Bill Semple's home.  
**Articles to be received by 5<sup>th</sup> of each month – without exception.**

### JUSTICE OF THE PEACE

Cherry Gardens: Michael (Mike) Deare Ph 83882185  
648 Cherry Gardens Road  
Coromandel East: Baldev Singh Dhaliwal – Ph 83705048  
Mob 0411 113 331  
Mrs Vicki Hayman Ph 0405 015 411  
Blackwood: Darren of Kruse Legal Ph 82781779  
Office of Sam Duluk MP Ph 82785844  
JP Services are available Mon–Fri 9-5  
**JP's work at no charge, so please CALL FIRST to book an appointment.**

### HAPPY BIRTHDAYS for OCTOBER

Hannah Pillar	Alicia Anson
Rick Grear	Evonne Stevens
Heidi Vickerman	Joanne Monahan
Kaitlyn Monahan	Clayton Smalley
Charlotte Smalley	

### HALL NEWS

#### CHERRY GARDENS

#### MEMORIAL HALL FOR HIRE

Available for hire for all functions, meetings & social occasions  
Very reasonable rates  
For bookings and more information phone 8270-2232



Why not "Like Us" on Facebook to keep up to date with coming events [www.facebook.com/cherrygardens/](https://www.facebook.com/cherrygardens/)



## CHERRY GARDENS MEMORIAL HALL COMMUNITY CAMPFIRE

The Cherry Gardens Memorial Hall is one of only a few halls in the Onkaparinga Council which is not owned by the Council. In fact it is owned by the Community of Cherry Gardens, and we receive an annual Maintenance Grant from the Council to assist in the maintenance, repair and upkeep of the hall.

The voluntary committee of local people works very hard to promote the hall to the local community, and we run functions which provide an opportunity for the local community to come together.

One of these is the very popular Community Dinner, held in June, and always a sell-out.

More recently, on the 14<sup>th</sup> September, was the third Community Campfire. A good crowd of locals enjoyed the roaring campfire, which was started at 11am to ensure it was well ablaze by the start time of 5pm. The function runs from 5pm to 8pm so that if people have another function to attend, this is a great way to start the evening. Having said that, the 8pm finish time is very flexible, and a number of people stayed and enjoyed the



campfire well into the evening.

To ensure people stay well nourished, there is some great fare to tempt the appetite. Two soups were on offer, a Baked Potato and Leek with Sour Cream and Chives, and also a Maple Bacon with Mixed Vegetables. To complement the soup, the campfire was put to good use making Rosemary Damper. Also, the old faithful sausage sizzle was very popular.



Red wine and white wine were available, as well as mulled wine. We also had marshmallows for roasting by the many children who attended. The CFS again attended with one of their trucks, always popular with the younger set, and I think by the not-so-young.

We were blessed with a beautiful Cherry Gardens night, a spectacular moon and a great group of local people. The campfire will be on again next year, and we will provide plenty of notice in the Cherry Chatter and with our A-Frames on Cherry Gardens Road. We hope to see you there.

### WELCOME



The Cherry Chatter committee would like to welcome the newly settled families who have recently moved into the Cherry Gardens area.

We hope you love living here as much as we do.

### WELCOME PACKS

If you are new to the area and have not yet received a welcome pack, please contact the editor at [cherry chatter@yahoo.com](mailto:cherry chatter@yahoo.com) with your address.



Like us! <https://www.facebook.com/92CherryChatter/>

### CHERRY GARDENS CFS

***We train every Monday night for those who may be interested in what we do.***



To report suspicious behavior call Crime Stoppers on 1800 333 000. For all other emergencies dial 000 and ask for "Adelaide, Fire" "South Australia"

After a long (and cold) winter we are finally seeing the days lengthen and the temperatures warm. During the Winter months the Cherry Gardens brigade focused our training on structural fires and car accidents, and due to the cold and wet evenings our training was frequently held in the station rather than going out into the surrounding area. Now that we're in Spring, our training shifts to bushfire preparation so we can be ready for the coming fire danger season. This tends to be more practically based rather than theoretical. Typically we will respond to a simulated scenario at a grid reference, for example the air field, where orange cones will have been placed to mark the location of the "fire". While we

travel to the scene the Crew Leader will delegate responsibilities; the driver remains with the truck and mans the pump, two firefighters might be tasked to bring out the 25 mm fast attack line, two others might have the responsibility of dragging out the 38 mm line and setting it up. Everyone will be assigned VHF radios so we can maintain contact on the simulated fire-ground. Sometimes the exercise might simulate a running grassfire, in which case crew members will be assigned to stand on the crew-deck at the back of the truck and use the hoses on either side, as the truck drives slowly along.

Another element of training that is always present this time of year is the burn-over drill. A burn-over is a situation where a fire has unexpectedly changed direction and a truck in its path is unable to get out in time. The procedure in such an eventuality is for all crew to get into the cab, and for the driver to activate the sprinkler system which protects the truck from the outside. As scary as it might sound to be trapped in a truck while a bushfire passes, the truck offers substantially better protection from the radiant heat and the fire usually passes quickly. Each year CFS firefighters are required to practice burn-over drills so that in the unlikely situation that we need to get into the truck we can do so quickly and safely.

With the recent unseasonal bushfires in NSW many people are wondering what this year's fire season holds here in South Australia. Of course nobody knows, but it never hurts to be prepared and to have your bushfire plan ready. See the CFS website at [www.cfs.sa.gov.au](http://www.cfs.sa.gov.au) for more information, and stay safe.



## CHERRY GARDENS GARDEN CLUB

### Last Meeting:

Why would someone attend their garden club AGM on a freezing Adelaide hills night - even though not feeling the greatest? This wasn't one of the questions for our annual, post AGM, gardening related quiz.

But my answer is.....because it is such a great Garden Club of course!

So much can be learned from our annual gardening related quiz... I now know what a "Ditloid" is. The History, Science, Biology, Nomenclature, Benefits and Glitterati of gardening all featured in some way or another. Great fun!

AGM formalities preceded the quiz and as an indicator of the health of our club the President was nominated for the 11th consecutive time, the other officers were also nominated again, and the committee stood again. No-one else was nominated for any opposing officer

positions, and a new member, Jan Ball joined the committee.

The Annual reports of our President, Ray Wise, and Secretary, Shirley Callaghan, recapped the year's great experiences, speakers, events, trading tables, fund raisers, trips, garden visits and outings, really affirming last year's AGM decisions, in electing the committee we did. Our efficient treasurer gave a most impressive financial report. "Many hands make light work!" We had fun hearing the plans for our 20<sup>th</sup> birthday celebration in October. A clipboard was circulated, enlisting volunteers to assist at the opening of the first garden of one of our club members, under the Open Garden Scheme, - also scheduled for this October.

Prizes, generously subsidised by Karkoo Nursery 207 Main Rd Blackwood, rewarded "The Firecracker's" quiz team members.

What a spread the Supper team set out for us.

Once again unusual plants, fruits, seeds, bulbs or other gardening related items featured among what members had grown, bought, regifted or whatever else for the auction.

### Next meetings:

Monday 14th October - Neville Bonney author and bush tucker advocate will be our guest speaker.

Monday 11th November - Kristen Messenger from 'Bugs and Slugs' is an enthusiastic and experienced educator.

### George's Gardening Suggestions - October 2019

My first suggestion is to check out the details of the Cherry Gardens Garden Club's 20th birthday dinner which is on the night of Monday 28th October. You are welcome - it is a community event partly sponsored by the City of Onkaparinga as part of Every Generation month. There will be good company, good food and good entertainment by 'Walk Right Back' - details should be elsewhere in this edition.

Just about everything in the garden should be growing well this month but as you know a burst of hot days can devastate tender plants, so keep a weather ear on forecasts and protect vulnerable young plants.

Petunias, phlox, portulacas, sunflowers, and zinnias all grow well in warm to hot conditions.

Vegetables to plant could be beans (bush and climbing), capsicum, pumpkin, cucumber, corn, and of course tomato.

Always plant young seedlings into damp well prepared soil for best results. For a continuous harvest of vegetables plant every 3-4 weeks and with all young plants give them a regular liquid feed. Potash enriched fertilizers are great for fruit producing plants as it will promote strong growth, flowering, and fruit set.

Check irrigation systems and adjust timers for dryer conditions.

Prune flowering Prunus and crab-apples AFTER flowering. Dead-head any natives that have just finished flowering.

Thin heavy cropping fruit trees to achieve better sized fruit.



## OVER THE STABLE DOOR with Hamish

Greetings Fellow Equines and Horse Owners!

Last month we looked at the welfare of our horse in regard to dentition. As I have said before, the horse cannot speak for himself, but there are many ways in which he can show that he is not 'happy'. Being not 'happy' generally means that the horse is in discomfort of some kind. Some of the most obvious ways can include bucking, being difficult to bridle, going crooked, tail swishing, ears back, mouth opening, unsteady head carriage, reluctance to go forward, rushing, spookiness etc. A change in behaviour can also be an indicator and this could be general behaviour in the paddock, at the hitching rail, in hand, whilst being saddled or under saddle. A horse in good health and with no other physical issues should appear interested in his surroundings without being jumpy, soft and attentive ears which move in a relaxed manner. He should be well covered (with just a 'shadow' of ribs visible), coat should be soft and shiny, gums pale pink, skin soft and supple, eyes and nostrils clear and without yellow/green discharge and his breath should not stink! Horses do like to have a favourite loafing area and will stand in that spot for some time during the day, but if when you enter the paddock and he shows no interest in you and has a bit of a hang dog look, then this is definitely cause for concern. Research has recently shown that there are facial signs that tell us when the horse is in discomfort/tension/pain. What will help the owner here is to absolutely know your horse and what is normal for him. A relaxed horse will generally have a nice open and 'soft' eye. Under pain/tension, the eye will be slightly smaller with maybe some small creases visible. The corners of the mouth may also have extra wrinkles, nostrils may be pinched. These points will also be visible under saddle and will also include mouth opening – this could be just a tooth problem, or hard insensitive hands, badly fitting or too tight gear or a dirty bit. Making sure that the saddle fits correctly is so important as a badly fitting saddle can result in your horse having a very sore back, or even being out of action for quite some time. Remember too that the saddle has to fit both of you, so a 16" saddle will not be appropriate for most adults and a child will not be as secure in a larger size. Getting your horse properly fitted is highly recommended and could save money and discomfort in the long run. Also do ensure that the saddle cloth is kept clean and free of sweat and fur. Keeping at least one or two spares is a good idea. These days most saddle cloths come shaped to the horses' back with tabs to attach to parts of the saddle. These tabs actually play an important part in keeping the edges of the saddle off the horses' wither if fitted correctly. When saddling up check that 4 fingers can be passed vertically between the gullet of the saddle and the wither. After an hour or more in the saddle, this



often slips down and can become very tight and hard. This causes a nasty pressure point which can result in your horse showing resistance under saddle.

A horse owner naturally wants to have a relaxed and enjoyable ride, so by taking some extra care in regard to his welfare this will certainly enhance the probability of a relaxing time together! An interesting analogy is to compare the fitting of the gear to the fit of a pair of shoes. When they don't fit it can become absolute agony and not something anyone would willingly put up with.

Apologies for waffling, I have got somewhat side-tracked! More on gear and comfort next month!

Comfortable riding and enjoy the spring – Hamish

## FRIENDS OF SCOTT CREEK CONSERVATION PARK

Are you interested in nature? Native plants? Wildlife? Looking for a break from the hustle and bustle? Want to give something back to the community or Mother Nature?



We invite you all to come along to our open day on Sunday 13<sup>th</sup> October. Taking place between 10am and 3pm behind the Almanda mine car park on Dorset Vale Road. This is our fourth annual open day, but the first that we have held in spring. This is to ensure visitors get the opportunity to see more of the beautiful native wildflowers of the Park, which are more abundant at this time of the year.

There will be members of the Friends group on hand to answer questions, with a food and drink stall provided by the local Scott Creek Primary School. Once again there will be a self-guided walk along Almanda Creek and around Almanda Swamp. John Wamsley has prepared a handout with plant names and fascinating information about these and other items of interest you will see along the way. These are numbered to match labels that will be placed along the walking trail.

Anyone wanting more information about the Friends of Scott Creek CP, or wanting to get involved, can contact us on [info@friendsofscottcreekcp.org.au](mailto:info@friendsofscottcreekcp.org.au) or visit our very informative website

[www.friendsofscottcreekcp.org.au](http://www.friendsofscottcreekcp.org.au). You can also now follow us on our Facebook page

[www.facebook.com/friendsofscottcreekcp](https://www.facebook.com/friendsofscottcreekcp) where you will find up to date information about our activities, including photos of the park's flora and fauna.

All working bees meet at 9.00am at the Almanda Car Park on Dorset Vale Road (unless there is a MLR fire ban or very wet weather). To attend bird banding, contact the coordinator Don Reid on 83882123.

### Programme of activities - October

Tue	1	Working bee
Sat, Sun	5, 6	Bird banding
Sun	13	Open Day

Sat, Sun 19, 20 Bird banding  
 Wed 23 Social lunch  
 Sat 26 Working bee  
 Sun 27 Visit to SA Museum photography exhibition



Visitors at the 2018 Open Day



The walking trail around Almada Swamp at the 2018 Open Day

## MINTON FARM

455 Cherry Gardens Road, Cherry Gardens, SA, 5157

Phone 82701169

Mobile: 0422938439

[www.mintonfarm.org](http://www.mintonfarm.org)

<https://www.facebook.com/mintonfarmanimalrescuecentre>



## CHERRY CHURCH

87 Hicks Hill Road, Cherry Gardens

Services – Sundays, 9.30 am

Cherry Church contact: Rob

Linn 0407 971 650

On a Sunday morning in early June this year, the Cherry

Gardens Church received a visit from the Lofty Rangers Walking Group. The Group's organiser has very strong links with many people in the area and caught up with news about them from members of the congregation.



The Walking Group chatted to us over morning tea and it was an enormous pleasure to learn of the backgrounds of all those involved and to share hospitality with them all. They expressed their delight in finding the Church on Hicks Hill Road, learning more about it and the community.

Although tucked away from the main road, for over 170 years, the Cherry Church has been a focal point. It is not unusual for individuals or groups of people to stop there, to look at the early headstones – many crafted by the nineteenth century Willunga stonemason and builder, George Sara – and to ponder how amazing it is that such a building is situated there.

Those who founded the church, though, had no doubt at all why it was built. They responded to the call of Jesus to spread His word. Over the many decades since, that call continues undiminished.

As a place of Christian worship, the Cherry Church and its lively congregation welcomes everyone to drop in. Sunday morning worship is held each week at 9.30 am, followed by a cup of tea. Please come and join us, we'd love to see you.

*Thought for the month:*

*Then Jesus declared, "I am the bread of life. Whoever comes to me will never go hungry, and whoever believes in me will never be thirsty." John 6:35 New International Version (NIV)*

Web site: [cherrygardensunitingchurch.org](http://cherrygardensunitingchurch.org)

Email: [cherrychurchinfo@gmail.com](mailto:cherrychurchinfo@gmail.com)

Facebook: <https://www.facebook.com/CherryGardensUnitingChurch/>

## RECREATION GROUND

# CLUBROOM FOR HIRE

KITCHEN - BAR - AUDIO/VISUAL

Looking for somewhere to host that next Event or Party? Run a weekly group or class? We're always on the lookout for hirers. Get in contact with the Cherry Gardens Ironbank Rec Ground to see our Hire Agreement, prices and different options.

Find us on FB or email [andyrvadams@gmail.com](mailto:andyrvadams@gmail.com)



## SAVE THE DATE – CHRISTMAS IS COMING!!

On Sunday December 8<sup>th</sup> there will be a community Christmas Show at the Recreation Ground. It will be a combined event including all the sports clubs and the Cherry Chatter crew. Everyone is welcome to come along from mid-afternoon till early evening.

There will be games for the kids, face painting, some live music and at around 6PM we are expecting Santa to drop in and spread some Christmas Cheer.

There will be BBQ and drinks available.

Hope to see everyone there.





## IBCG Netball Club

Another very successful winter netball season for us particularly with our junior teams. We started the year with 21 teams all vying for premierships and ended the minor round with 15 teams in the top four and playing in the final's series. We contested 10 grand finals with 7 winning and taking out their respective premiership flags. (Congratulations to 11.3, 13.1, 13.2, 13.3, 15.1, 17.2 and B1) Special mention to our 13.1 and 13.3 teams who both finished the minor round in 4th place and came through some very tough games to win their respective premierships. Also, to our 17.2 teams who showed great club spirit during their grand final "showdown" and very close game with only 2 goals between them at the final siren.

Hills Netball Assoc (HNA) awards:

The formula for working out the HNA Club achievement award allows smaller clubs to be just as likely to take out the award as bigger ones so it was wonderful for our club to be presented with this at the end of the GF presentations on 7th Sept.

The Hills Netball Association Best and Fairest medal winners were announced on grand final day as well. We are very proud to congratulate Best and Fairest winners:

Maddie Richter-B1, Shakaya Hembury - B2, Jaslyn Wells- 17.1, Kaia Walker-17.2, Charlotte Lewis - 15.1, Jess Hocking- 15.2, Charlize Hough - 13.2, Harper Wickham Elleway - 11.2,

And Runner up B&F - Beth Richter - B1, Layla Wigzell - 17.2, Eva McMartin - 11.3

Maddie Richter also received the most votes for any player in the association and received a perpetual award for this.

During 2019, several members of our junior teams represented the HNA at various carnivals throughout the state. Congratulations to the following girls for being chosen: UNDER 11's Ashlyn AMBLER and Holly AMBLER, UNDER 13's Molly FIELD, Kari HUSTON, Harmony WIMALARATNE, Summer ROSS, Eliza WEGNER and Caitlin MCMARTIN, UNDER 15's Tyla HANCOCK and Layla WIGZELL

Our Gold sponsor Aldinga After Hours GP contributes much needed funds to our club to enable us to keep improving our first class netball facilities. Thank you Dr James Moxham, Nicole and family. To Summit Glass (Gavin Chant) our silver sponsor, your support is also appreciated by the club.

Junior and Senior presentation days have been held and trophy winners were:

17.1	B&F	Jaslyn Wells
	RU	Jurrakee West
	Coaches Award	CA Irulan Murphy
17.2 Green	B&F	Layla Wigzell
	RU	Mikayla Mackereth



17.2 Gold	CA	Gypsy Donk
	B&F	Kaia Walker
	RU	Jamie-Lee Dean
15.1	CA	Amy Clarke
	B&F	Charlotte Lewis
	RU	Riley Houston
15.2	CA	Juliette Brusic
	B&F	Jess Hocking
	RU	Clara Wegner
13.1	CA	Amelia Clarke
	B&F	Caitlin McMartin
	RU	Molly Field
13.2 Gold	CA	Alana Fitzpatrick
	B&F	Eleanor Haigh
	RU	Grace Smith
	CA	Keira Francis-Nia Nia
13.2 Green	B&F	Charlize Hough
	RU	Jessica Laurie
	CA	Lucy Coleiro
13.3	B&F	Alicia Carr
	RU	Holly Ambler
	CA	Frankie Talbot
11.2	B&F	Harper Wickham-Elleway
	RU	Celeste Krinic
	CA	Caitlin Harris
11.3	B&F	Eva McMartin
	RU	Eloise Goldsworthy
	CA	Daisy Murray
League	B&F	Tegan Morgan
	RU	Jess Stratfold
	CA	Erin Hegarty
A1	B&F	Shari Giles & Kelsey Searle
	RU	Jes Cross
	CA	Skye Morgan
A2	B&F	Lauren Strachan
	RU	Meg Beaty
	CA	Ashley Platt
B1 Green	B&F	Jess Meldrum
	RU	Jemma Deen
	CA	Julie Pringle
B1 Gold	B&F	Maddie Richter
	RU	Beth Richter
	CA	Elisha Scriven
B2 Green	B&F	Shelby Adams
	RU	Sarah Hegarty
	CA	Madeline Harrison
B2 Gold	B&F	Shakaya Hembury & Liz Maciunas
	RU	Kylie Thane
	CA	Lani Walton
CI Gold	B&F	Chantelle O'Brien
	RU	Jodee Rayment
		Emma Reade
CI Green	B&F	Laura Hayden
	RU	Rhiannon Baldock
	CA	Eleahn Georg-dent
C2	B&F	Donna Gunn
	RU	Leah Eustice
	CA	Michelle Carr

Thank you to the committee who have supported the club throughout 2019.

Jenny Pearce President, Donna Gunn Vice President, Terri Steer Secretary, Naomi Chant Treasurer, Kim Milde, Naomi Chant, Kat Mackereth, Luke Mackereth, Nicole Moxham, Julie Pringle, Leonie Womersley, Di Morgan, Shari Giles, Erika Hancock, Melissa Sharrad, Ingrid Wigzell, Liz Prowse, Lisa Ambler, John Strachan

President: Jenny Pearce [lbcgpresident@gmail.com](mailto:lbcgpresident@gmail.com)

Vice President: Donna Gunn

[lbcg.vicepresident@gmail.com](mailto:lbcg.vicepresident@gmail.com)

Secretary: Terri Steer [lbcg.secretary@gmail.com](mailto:lbcg.secretary@gmail.com)

Treasurer: Naomi Chant [lbcg.treasurer@gmail.com](mailto:lbcg.treasurer@gmail.com)

## MAX RICKS RECOLLECTIONS

### The Home for Incurables Group

One summers' day in about 1960, a cousin, Ray Lewis, and I went to the Adelaide Oval and watched a day's cricket of a test match between England and Australia. As a school boy about 30 years before, Ray had polio, and was restricted to a wheelchair with little or no use of his legs and arms. To get Ray to the cricket, we used our 2-3 ton Bedford Truck, and rolled Ray's wheel chair off the ramp at the home for Incurables where he lived, and secured him in his wheel chair to the back of the truck which was surrounded by strong frames. During the course of the day while we were watching the cricket, Ray asked if it would be possible to take some more of his wheelchair mates who lived at the Home for Incurables, on some outings. Fortunately, at about the same time, the group of young people who had formed into the Cherry Gang jumped at the chance to take a truck load of wheelchair people on outings. So it was arranged that on the last Sunday of each month we would pick up a truck load of patients in wheel chairs at about mid-morning, and spend the day at the National Park, or other spots, and sometimes in the summer we would go to the beach. There was one girl called Milly who spent her time in a cot who was totally incapacitated, other boys were Ray, David, Ross, Ivan, Peter, Robert and Les. Some were victims of polio, others had Muscular Dystrophy, while Les was a road accident victim, paralysed from the waist down. All the people had various levels of ability, some were good at drawing and painting, but were all very intelligent people, full of wit, and great company. When we went to the beach (usually to Glenelg) the lads from the Home arranged that we could have the use of the Glenelg Life Savers Club Rooms. Ray and David used to like to go into the water, and we would wheel them in their wheel chairs into the sea until the water was deep enough, then take them out of the wheel chairs and float them on their backs, just holding on to the back of their heads



and there they would float. To unload the people from the truck where there was no ramp, we used wide planks which we carried in the truck and attached them to the tray of the truck and resting the other end on the ground. When anyone of the wheelchair patients had a birthday, we would repeat the process and Ray would arrange for an evening meal at a restaurant somewhere in the Suburbs. At this time in the early 1960's the authorities at the Home which was later called The Julia Farr Centre, gave us freedom to take the folks out at night, so long as we put them to bed when we got back. These trips lasted 3 to 4 years and thoroughly enjoyed by all until we, at the Cherry Gang, eventually went our own separate ways.

## COUNCILLOR UPDATE – GEOFF EATON

*Note that these comments are the opinion of the councillor and not necessarily those of the council.*

### Boundary Reform

There has been no progress in relation to the matter of boundary reform within the City of Onkaparinga, since the City of Marion withdrew its interest some months ago. The Chamber (Council) is still waiting for a report from the administration concerning Cr Themelioti's motion at the April meeting for discussions to be held with the Cities of Marion, Mitcham and Adelaide Hills Council. There has been recent media coverage concerning interest by the City of Holdfast Bay taking over suburbs currently contained within the City of Marion, with the Mayor of Marion responding that the two council areas could be combined and the State Attorney General regarding the movement of boundaries between the Cities of Burnside and Norwood, Payneham and St Peters. In recent days Gawler Council has indicated a desire to reform its boundaries with adjoining councils. It is interesting to note that the current review the State Government is having undertaken into local government is not considering local government boundary reform.

Cherry Gardens resident Darren Kruse (Councillor with the City of Mitcham) has set up an Internet site to gauge the interest of Cherry Gardens and Coromandel East residents in moving to Adelaide Hills (see article in this edition). He is also planning to hold a public meeting regarding this issue at the Cherry Gardens Memorial Hall to further discuss this. I encourage all residents to respond to this, whether they are in favour or against such a proposal to be put to the Boundaries Commission as it will provide an opportunity for a community petition to be prepared and not incur the \$240,000 cost that is charged to councils should they seek a boundary reform. Similarly, he is doing this for the Coromandel Valley area as well.

### Northern and Hills North District Reference Group

This group was established by the City of Onkaparinga earlier this year for community associations/groups in



the hills and northern parts of council to network and meet with the administration. I am the elected member on this group. The next meeting is to be held at the Happy Valley Scout Hall on Candy Road, Happy Valley on Wednesday 30 October at 3.30 pm and I would encourage our community groups to attend this meeting.

### **Economic Development**

As I indicated in my previous article the Blackwood Business Network (BBN) is now representing businesses throughout Thalassa ward on the City of Onkaparinga Economic Development Forum and I encourage any business in the Cherry Gardens area to contact Ms Jane Silbereisen, chairperson of the BBN and discuss opportunities with her. The BBN can be contacted through their Website at [www.blackwoodbiz.com.au](http://www.blackwoodbiz.com.au)

### **ON Business Partner Program**

The ON Business Partner Program is an initiative of the City of Onkaparinga to support local business to thrive and grow. The ON Program offers a range of support services including:

- a business advisory service
- a grant program
- education and networking sessions
- a local business directory
- a free webpage for businesses
- a program of local procurement.

Visit the <https://www.onbusinesspartnerprogram.com/> for more information or to list your business and take advantage of the support offered by the City of Onkaparinga.

I encourage local businesses to register with the City of Onkaparinga ON Business Program

### **Southern Sports, Recreation and Surf Life Saving Clubs Forum, City of Onkaparinga**

Can I encourage sporting clubs in the Cherry Gardens area to participate on this forum? I am hoping that meetings will be held across the whole council area so that clubs gain a better understanding of each other's facilities and their needs. The next forum's general meeting has not been announced as yet but sporting and recreational clubs will receive an invitation to attend.

### **Speed Limit Ackland Hill and Ironbank Roads**

Council has reviewed all the feedback received and the speed limit reduction was supported, with some concerns raised regarding additional travel times associated with the reduction. They are coordinating the review with Adelaide Hills Council with the aim of providing consistent speed limits across council boundaries. Both councils have received support in reducing the speed limit further in the vicinity of Cherry Gardens Road and the recreation ground. Based on the higher concentration of development and entrance to the sports ground, the Department of Planning Transport and Infrastructure (DPTI) have provided in-principle support for a 60km/h speed limit between the

council boundaries and Woodcutters Road and 70km/h for the remainder. The affected residents and sports groups were advised of the speed reduction on 23 August 2019. The next stage will be to notify DPTI to progress with these changes. Once approval is received, council will arrange installation of the new speed limit signs, with the aim of having it completed by late October 2019.

### **Disclaimer**

The views expressed in this article are my own and do not necessarily reflect those of Council.

Geoff Eaton  
Councillor  
Thalassa Ward  
City of Onkaparinga  
Email: [geoff.eaton@onkaparinga.sa.gov.au](mailto:geoff.eaton@onkaparinga.sa.gov.au)  
Mobile: 0416 637 351

## **PLASTIC WASTE**

This July saw millions of people get involved in Plastic Free July. Plastic Free July is a global movement that encourages people to be part of the solution to plastic pollution – so we can have cleaner streets, oceans, and beautiful communities.

More than 8.3 million tonnes of rubbish finds its way to our oceans each year. A million tonnes of this stays in the ocean. The rest of it finds its way onto shores all over the world. This rubbish comes from both land and sea-based sources and can travel immense distances.

This rubbish in our oceans negatively impacts coral reefs, wildlife and human health.



### **How can we solve the ocean plastic crisis?**

The CSIRO are investigating the relationship between humans and our environment. The focus is on sources and amounts of plastics around Australia and the world.

### **The world's largest plastic pollution survey**

They are taking on the world's largest plastic pollution survey and working with countries across the globe to apply science to reduce the amount of litter entering our oceans.

To date, the best estimates say there are around 6-12 million metric tonnes of plastic going into the oceans each year. That works out to be around 15 shopping

bags of plastic for each metre of global coastline (excluding Antarctica).

### **What can be done?**

Every piece of plastic in our oceans started in someone's hand. By gathering the information needed to identify sources and hotspots of debris, we can better develop effective solutions to tackle it.

Scientists, industry, government and citizen scientists can make significant strides to reduce the impact in coastal areas and in the marine environment by working together and a good start is the survey that CSIRO have developed. Here you can contribute data you collect about litter at your local beach. Just follow the link and you can contribute to this survey <https://www.marine.csiro.au/apex/f?p=120:LOGIN>

### **More tips for reducing your impact**

Together, we can contribute to the improved understanding of the types, amounts and sources of debris that arrives on Australia's coastline. And reducing the amount of plastic we use is a good way to start! Here are some useful tips to reduce the amount of single use plastic waste. If you have any other suggestions, then let us know!

- Make sure you always have an eco-friendly bag in your car and handbag.
- Purchase reusable cloth bags to use for your fruit and veggies at the supermarket – or go bag-less all together.
- Say no to plastic straws, carry a reusable straw instead.
- If food outlets allow it, bring your own plasticware for takeaway.
- Buy and use your own reusable coffee cup.
- Opt to dine in instead of taking away.

## **MEADOWS VET NEWS**

With all the rain we have had there is no doubt this will result in great pasture growth and this will dramatically increase the risk to horses and ponies of getting Laminitis and Founder. This is a common condition which causes varying degrees of foot pain, from the slightly potterly pony to severe life-threatening lameness.

Owners often underestimate its potential to cause long term unsoundness. It is not uncommon for severe and uncontrolled cases to require euthanasia! It is important to realise that laminitis can progress from mild to severe even if early treatment is instigated. Early warning signs must be heeded and action taken immediately! Some of the most common clinical signs of laminitis include:

- shifting weight from one foot to another,
- standing with weight on rear legs leaning back
- reluctance to walk
- lameness and palpable heat in the feet
- increased pulses in the digital arteries over the fetlock.
- increased heart rate and respiratory rate

Remember prevention is much better than treatment so be vigilant and if you have a horse or pony prone to getting laminitis products such as Founder Guard can be very useful!

## **CHERRY GARDENS GARDEN CLUB INC**

Invites you to celebrate with us our

**20<sup>th</sup> BIRTHDAY**

with a

### **COMMUNITY DINNER**

at **BLACKWOOD GOLF CLUB**

**611 Cherry Gardens Rd, CHERRY GARDENS**

on

**Monday 28th October, 2019**

**6:30 pm nibbles on the balcony for**

**7:15 pm 2 course dinner**

**Bar facilities available**

**Music by WALK RIGHT BACK**

**Cost \$15 per person**

**BOOKINGS ESSENTIAL – LIMITED SEATS**

**Phone : Shirley – 0403801916 or Ray – 83836011**

**PREVIOUS MEMBERS ESPECIALLY WELCOME**

**SUPPORTED BY CITY OF**





## LIBRARIES – WHAT'S ON

Join us for a range of activities across our network of six libraries.

- Staying Safer Online II
- Digital drop-in sessions
- Introduction to email
- Websites and blogs
- Richard Pascoe – Adelaide Tech Guy
- Travel the World – Morocco and Africa
- Op Shop Fashion Show
- Sustainable development goals
- Children's book group
- PlayStation virtual reality

## School holiday activities

Plus we have lots of activities for the October school holidays with our Wild Nature theme! Please contact your library, visit our website or pick up a brochure for more information.

- Children's University
  - How we send messages
- Animals anonymous
- Native flower crowns
- Storytime sessions
- Green screen
- School holiday movie
- Nature craft workshop
- Elements challenge
- Windy challenge

To book or to find out more information about events at your library, phone, drop-in or visit [www.onkaparingacity.com/libraries](http://www.onkaparingacity.com/libraries)

 Follow us on Facebook  
[www.facebook.com/onkaparingalibraries](https://www.facebook.com/onkaparingalibraries)

## SUSTAINABLE SPRING WORKSHOPS

### Discover nature by night in Wirra Creek

Thursday 3 October, 6–7.30pm  
Willunga Golf Course (meet in the car park)  
23 St Peter's Tce, Willunga  
Free event

Grab your torch and join us for a fun, guided night walk to discover the bats, frogs and other awesome creatures that come out after dark.

Don't forget to bring a torch.  
Suitable for all ages. Bookings essential.

## Lunchbox wraps

Tuesday 8 October, 10–11am  
Willunga Library, St Peter's Terrace, Willunga  
Free event

Create your own lunchbox wraps that you can use again and again with easy to make beeswax wraps! All materials provided.

Suitable for ages 8–12. Bookings essential.

## Natural homes: Biophilic design

Saturday 19 October, 10–11am  
Willunga Environment Centre  
15 High Street, Willunga  
Cost: \$15

Discover what species of indoor plants to choose and how to ensure they thrive, why natural fibres are better for people and the planet, and how to connect to nature inside your home. Includes a house plant to take home!

Suitable for adults. Bookings essential.

To book or to find out more information about these events call 8384 0666 or visit [www.onkaparingacity.com/sustainableworkshops](http://www.onkaparingacity.com/sustainableworkshops)

## EXPECT THE UNEXPECTED!

### SUE FORESHORE FESTIVAL

Sunday 6, 13 and 20 October, noon–4pm

Series of Unexpected Events (SUE) is a City of Onkaparinga festival curated by Artistic Director, Paul Gazzola and OSCA – Open Space Contemporary Arts. SUE is a biennial festival of temporary art and performance that will take place across 3 Sundays in October in and around the foreshore area of Port Noarlunga.

This year's version of SUE will see 20 local, national and international artists creating a series of unexpected performing art installations within the cultural precinct of Port Noarlunga. SUE will expose how contemporary forms of artistic expression can add another creative dimension to celebrate the diversity of culture, community and geography of the area.

SUE encourages individuals, groups and communities including children and young people to engage in artistic experiences outside more traditional forms of public art.

For more information visit  
[www.onkaparingacity.com/sue](http://www.onkaparingacity.com/sue)

## EVERY GENERATION ONKAPARINGA

Our Every Generation Onkaparinga (EGO) program celebrates positive ageing and the outstanding achievements and valuable contributions people of all ages, cultures and abilities make to positive ageing in our communities.

## October events

During the month of October various events and activities are held for people to come together to celebrate and acknowledge these achievements and contributions.

## More information

Contact Justin Ifould, Community Wellbeing Officer on 8384 0666, email [Justin.Ifould@onkaparinga.sa.gov.au](mailto:Justin.Ifould@onkaparinga.sa.gov.au) or visit [www.onkaparingacity.com](http://www.onkaparingacity.com)

## CODE OF PRACTICE – ACCESS TO MEETINGS AND DOCUMENTS

The City of Onkaparinga is currently reviewing its Code of practice – access to meetings and documents.

This code sets out the commitment of council to provide public access to Council and Council committee meetings and documents. It also outlines the sections contained within the *Local Government Act 1999* that on occasions restrict public access.

As per section 92 of the *Local Government Act 1999* before Council adopts, alters or substitutes this code it is a requirement of our public consultation policy to provide the draft code for public comment.

## Have your say

The draft code can be viewed online at [www.onkaparingacity.com/yoursay](http://www.onkaparingacity.com/yoursay) or at any council customer service point.

The closing date for submissions is Friday 25 October 2019.

## Submit your feedback

- Online at [www.onkaparingacity.com/yoursay](http://www.onkaparingacity.com/yoursay)
- Send your written submission to –  
City of Onkaparinga, PO Box 1,  
Noarlunga Centre SA 5168

## More information

Contact Therese Brunotte, Senior Governance Officer on 8384 0666, or email [therese.brunotte@onkaparinga.sa.gov.au](mailto:therese.brunotte@onkaparinga.sa.gov.au)



# Put second-hand first and join the Garage Sale Trail

**The City of Onkaparinga is once again supporting the Garage Sale Trail, Australia's biggest weekend of garage sales in October.**

The event, which will be held on Saturday 19 and Sunday 20 October, is dedicated to getting Australians across the country to choose second-hand first by hosting a garage sale or shopping the trail.

The objectives of the Garage Sale Trail support council's commitment to waste reduction and provides a fun way for people to declutter, fundraise or make some money, and meet their neighbours. It also aims to inspire Australians to understand the importance of re-use and the need to take individual responsibility for the impact the stuff we buy has on the world around us.

Residents, sporting clubs, community groups, schools, streets, charities, makers and creators, and businesses are encouraged to take part, either by hosting a garage sale or going to one.

It's free for the community to get involved.

To register a garage sale as part of the trail, all people need to do is enter their details at [garagesaletrail.com.au](http://garagesaletrail.com.au). Once registered, they get access to a range of free promotional materials.

Sellers can fundraise for a cause or make themselves a few extra dollars, or simply use it as a way to declutter their home or office.

All the registered garage sales are available on the website ([garagesaletrail.com.au](http://garagesaletrail.com.au)) and trail-goers can search local sales, mark their favourite items and then create a personalised trail map for the day.

Event organisers anticipate over 16,000 garage sale events will be held nationwide and more than 400,000 people will participate in some way.

Last year on average, household garage sales made \$309, participants connected with 46 local people, and more than 500kg of stuff was sold and re-distributed at each garage sale (figures from Garage Sale Trail).

The Garage Sale Trail is a not-for-profit social enterprise founded in 2010 and is supported by more than 140 councils nationally.

For more information, including to register a sale or search the sale trail, visit [www.garagesaletrail.com.au](http://www.garagesaletrail.com.au)



19+20 OCTOBER 2019

## TEN PIN BOWLING

**Have some fun with our new ten pin bowling group for older adults. No experience necessary and use of ramp and bumper rails available.**

Supported by the Australian Government Department of Health. Although funding for this has been provided by the Australian Government the material contained herein does not necessarily represent views or policies of the Australian Government.



**Thursdays, 10.30am**

**Zone Bowling**

David Witton Drive  
Noarlunga Centre

**\$6.45/game**

Bookings required –  
phone 8301 7232



## JEFF BURTON

Vicks Road,  
Cherry Gardens

**PHONE: 8388-2268**

**Mobile:**  
**0410 533 268**



- Earthmoving
- Excavating
- Driveways
- Trenching
- Shed & Tank Sites
- Footings
- Soakage Trenches
- Stumps Removed

## BACKHOE HIRE

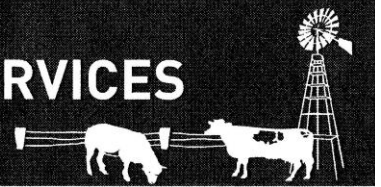


*'Proudly servicing the  
Cherry Gardens Area'*

t: (08) 8370 2195      205 Main Road  
f: (08) 8370 2954      Blackwood, SA 5051  
t: blackwood@tyrepower.com.au  
w: www.tyrepowerblackwood.com.au

## REJUVENATE FENCING & AGRI SERVICES

PROPERTY MAINTENANCE



**FENCING** – New & Repairs  
**YARDS** – Cattle, Horse & Sheep  
**WATER** – Troughs, Tanks & Lines

**SERVICING  
ALL  
AREAS**

**CONTACT GEOFF PHELPS 0429 876 071**  
rejuvenateagriservices@bigpond.com.au



WHERE THE GRASS IS GREENER

### Choose the agent who knows the Adelaide Hills.

Living locally on 7 acres of land, Valerie has an affinity with the Adelaide Hills and in particular character homes & lifestyle acreage.

**For a free no obligation appraisal  
contact Valerie Timms today!**

0447 312 218 | 8471 6111  
valerie@timmsrealestate.com.au

**Sales | Styling | Service**



2/262 Main Road, Blackwood | timmsrealestate.com.au | **8471 6111**

RLA 245235

**Emilis Prelgauskas  
architect**

108 Cherry Gardens Road

**0415 631 713**

your property reviewed for  
energy and water saving



Photography services - across the  
**Adelaide Hills, Fleurieu Peninsula,  
Kangaroo Island & South Australia**  
individual & family portraits  
events & celebrations, pets & livestock  
commercial & private, landscape & real estate  
wild-life & flora, vehicles & machinery

**Obligation free quote**

**PhD Photography – 0410470309**

[www.phdphotography.com.au](http://www.phdphotography.com.au) – [paulh@phdphotography.com.au](mailto:paulh@phdphotography.com.au)



**Dr Greg Rodda BVMS, BSc**

**Dr Sarah Tomlinson BVSc & Dr Rachel Penn BVS DVM**

**Dr Jane Sheehan BVSc MSc**

***“Providing professional, friendly care to all creatures great and small”***

Incorporating our “Woofs and Whiskers” pet grooming and “Meadows Mews” cat boarding.

Special interest in Equine Dentistry and Reproduction including Frozen & Chilled Artificial Insemination

Please visit our web site [www.meadowsvet.com.au](http://www.meadowsvet.com.au) or  
find us on Facebook [www.facebook.com.au/MeadowsVetCentre](http://www.facebook.com.au/MeadowsVetCentre)  
Email: [admin@meadowsvet.com.au](mailto:admin@meadowsvet.com.au)

2 Battunga Rd Meadows SA 5201 **PHONE 8388-3455**

**24 HOUR EMERGENCY SERVICE AVAILABLE**

# MOONS EARTHWORKS & FOUNDATIONS

***SPECIALISING IN –***

***GENERAL EARTHWORKS, FOOTINGS & FOUNDATIONS, CONCRETING OF SHEDS AND  
DRIVEWAYS***



**TRACKED SKID STEER, BOBCAT, EXCAVATORS & TANDEM TIPPER**



**LOCAL TO CHERRY GARDENS AREA**

**PHONE SCOTT on 8270 – 8270**

**BLD232706**



# CARLING ELECTRICAL

Electrical  
Contractors

**M: 0404652862**

carlingelectrical@gmail.com

www.carlingelectrical.com

- Domestic/Commercial
- Property Maintenance
- Outdoor Entertaining
- Landscape Lighting
- Pool/Spa/Sauna
- 24 Hours



## HORSE STABLES & SHEDS

- Extensions & Alterations.
- Steelwork.
- Repairs to: Roofs, Gutters, Stockyards.
- Site - Welding.
- Concrete Tank Roofs.
- Carports & Verandahs.

**Lance Hart**

Phone (08) 8388-3516 / FAX (08) 8388-3716

Mobile: 0411 551 750

LIC NO BLD: 165324

GOING ON HOLIDAY?



## HAPPY PETS

At home care for all you pets  
- including horses.

I visit your pet in it's own home

Ex - Veterinary Nurse

Phone 8358-6560  
or 0405 775 250



## FREE FLOW PLUMBING

Commercial - Domestic - Events - Hospitality - Rural  
**Plumbing - Gas Fitting - Roofing & Guttering**

Commercial Fit Out \* Complete Bathroom Renovations \* Drain Cleaning (electric & jetting)  
\* Hot Water \* Programmed Maintenance \* Pumps  
Rain & Mains Water Replacement & Repairs \* Septic & Sewer Replacement

**Call Brett M: 0438 314 122** (24hrs/7days) or 8270 8766 (B/H)  
Cherry Gardens Road, Cherry Gardens. BLD 211915 / PGE 7292



**Wishart Jewellers**  
manufacturing jeweller

" ESTABLISHED 1953 "

QUALITY JEWELLERY MANUFACTURERS

Our Workshop is on Site.  
Jewellery can be Handmade to your Specifications  
By one of our 4 Qualified Craftsmen.

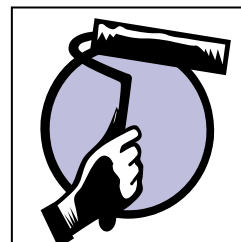
JEWELLERY REPAIRS and REMODELLING  
ESTATE & ANTIQUE JEWELLERY BOUGHT & SOLD  
INSURANCE VALUATIONS and QUOTATIONS  
WATCH REPAIRS - Swiss and Japanese

We have been Servicing Country Clients for 3 Generations.  
Come and see us at: 103 JETTY ROAD, GLENELG, SA.  
(We are open 6 days a week)

Contact us: by Email: [info@wishartjewellers.com.au](mailto:info@wishartjewellers.com.au)  
Phone: (08) 8295 1345 Fax: (08) 8376 0160  
[www.wishartjewellers.com.au](http://www.wishartjewellers.com.au)

## David J O'Ryan

Painting & Decorating



Interior / Exterior Painting

Paper Hanging &  
Stripping

Free quotes anytime

No job too big or small

Phone 8278-4364  
Mobile 0415 347 329

[djopainting@hotmail.com](mailto:djopainting@hotmail.com)

Lic No BLD201369



*Proudly since 1983, Blackwood Tree Services established team are the unsung heroes of safer backyards, schools and parks throughout the Blackwood Community*

- Tree Removals
- Tree Maintenance
- Tree Pruning
- Tree Stump Removal
- Storm Damage Tree Services

***Your Tree, Our Passion***

Please call us on (08) 8278-2538  
or 0419 867 724

E: [blackwoodtreeservice@yahoo.com](mailto:blackwoodtreeservice@yahoo.com)  
W: [www.blackwoodtreeservice.com.au](http://www.blackwoodtreeservice.com.au)



**Kruse Legal**

Wills and Powers  
Deceased Estates  
Family Law  
Cyber Law

Telephone 8278 1779



**TIM SMILES**

**TREE CLIMBING**

- Drop trees or trim
- Professional climber
- Fully insured
- Local to Hills
- Friendly & reliable

**Call Tim on  
0423361704 or 73294426**

ABN:67358757113



**STEVE MURRAY MP**  
MEMBER FOR **DAVENPORT**

*Local like you!*

***Here to help.***

**Office:** Shop 11, Hub Shopping Centre

**Post:** PO Box 3020, Aberfoyle Park SA 5159

**Ph:** 08 8270 5122

**E:** [davenport@parliament.sa.gov.au](mailto:davenport@parliament.sa.gov.au)

**Facebook:** /SteveMurrayDavenport

**JP Service:** Available 9:30am-4:30pm, Monday to Friday



TRACKLOADER



TANDEM TIPPER HIRE



SKID STEER LOADER



EXCAVATOR

**GENERAL EARTHMOVING AND EXCAVATION**

**STILL AVAILABLE FOR WORK IN THE CHERRY GARDENS AREA**

- \* House sites
- \* Horse Arenas
- \* Driveways
- \* Tennis Courts
- \* Tank and Shed Sites
- \* Fire Tracks
- \* Surplus Filling Removed

**Neil Schubert – 8383-7387 or 0413 280 513**

Lic. No. SR41157



## BLACKWOOD HIRE 8370 2488

"Your Ultimate Toolbox!"

■ Trailers ■ Party Hire ■ Heavy Duty Lawnmowers  
■ Garden Equipment ■ Mulchers ■ Lawn  
Maintenance Equipment ■ Portable Toilets ■ Plate  
Vibrators ■ Rollers ■ Concrete Mixers ■ Rotary  
Hoes ■ Hole Diggers ■ Horse Floats ■ Dingo Mini  
■ Diggers and much more.....

**OPEN 7 DAYS**

76 Main Rd, Blackwood. Ph: 8370-2488



197 Main Road  
Blackwood

Janet@bcps.net.au  
David@bcps.net.au

**8370 3344**

## PRINTING

- All general business printing & design
- Light Signage, foamcore, corflute, vinyl banners
- Large format printing for Outdoor or Indoor - posters, school, uni, home, photos, plans

## STATIONERY

- General business stationery and office supplies

## PRINTER CARTRIDGES

- Genuine & Compatible Cartridges
- Inkjet & Laser / Toner
- Large range of Printing Papers

## STEVE BOWDEN

Outdoor Home Improvements

Builders Lic No. RL23784

- \* Pergolas
- \* Carports
- \* Timber Decks
- \* Verandahs



667 Ackland Hill Road  
COROMANDEL EAST SA 5157

Phone 8388-2018 or 0412 392 171



## THALASSA WARD

Cr Geoff Eaton

Geoff.Eaton@onkaparinga.sa.gov.au

Cr Marion Themeliotis

Marion.Themeliotis@onkaparinga.sa.gov.au



# COROMANDEL LANDSCAPING

- ✓ Stone and Retaining Walls
- ✓ Water Tank Installations
- ✓ Irrigation, Drainage, Storm Water
- ✓ New Lawns and Lawn Renovations
- ✓ Garden Clean-Ups and Makeovers

**Gavin Patterson**  
**Mobile: 0404 109 919**

License BLD283817

# SANDERSONS

SINCE 1930

Grain | Fodder | Pets | Garden | Rural Supplies

Now offering **FREE DELIVERY** to your area\*

\* Mention this ad. Conditions apply.

Phone 8270 2173 | vikki@sandersons.com.au | 432 Main Road, Coromandel Valley, SA 5051



# SUMMIT GLASS

Contact Gavin on 0418 842 879

650 Cherry Gardens Road Cherry Gardens

Specialist in all your glazing needs:

- Broken Glass Replacement
- Glass Splashbacks
- Frameless or Semi-Framed Showerscreens

[www.summitglass.com.au](http://www.summitglass.com.au)



## FACE PAINTING

- Parties
- Promotions
- Any special occasion
- For all ages



Phone Therese on...  
8270-8275 or 0419 037 628

### FLEURIEU FIRE PROTECTION

**IS YOUR FIRE EQUIPMENT COMPLIANT?  
IF NOT, YOUR INSURANCE COVER  
MAY BE INVALID!**

Servicing your fire extinguishers, hose reels,  
hydrants, exit lights, maintenance  
and sales needs.

Great solutions – low cost!  
Compliance made easy.

You can rely on Fleurieu Fire Protection to  
provide a prompt and reliable service.

**CONTACT US NOW**

**0417 304 004**

[davidparker@fleurieufireprotection.com.au](mailto:davidparker@fleurieufireprotection.com.au)

## Jo Palfreyman Hairdressing

Now working from

Tailored Hair Design

Waite Street, Blackwood

**Phone: 0401 865 949**

## HARRIS



Peter Alexandrou  
0412 833 501



James Leo  
0408 408 009



Christina Middleton  
0423 154 659



Graeme Worsley  
0423 598 320

## FRITH AUTOMOTIVE

*For all your  
Tyre & Battery needs*

Contact Peter Frith  
Phone (08) 8388-2263  
Mobile 0429 690 726

[frithautomotive@bigpond.com](mailto:frithautomotive@bigpond.com)

443 Frith Road  
Corner of Mahar and Frith Roads  
CHERRY GARDENS SA

## AQUARIUS WINDOW CLEANING

- SHOPS
- OFFICES
- HOMES

**LOCAL & RELIABLE**

Phone GARY on:

0438 693 104  
or 8270-6038

## Renee's Nails



**CHERRY GARDENS**  
**Ph. 0403 807 038**

- Waxing
- Tanning
- Manicures
- Pedicures
- Acrylic Nails
- SNS Nails
- Shallac

*\$5 off your first appointment  
when you mention this ad.  
Hope to hear from you soon.*

## Faithly CLEANS



**0410 603 685**

- Reliable and trustworthy
- Police clearance
- Thorough and efficient
- Regular and one-off cleans
- Cover all areas

**We are looking for  
reliable cleaners to  
join our team.**

ABN, police clearance, cleaning equipment  
and insurance required.

If you are interested please contact us on

**0410 603 685**

**Email:** [faithlycleans@gmail.com](mailto:faithlycleans@gmail.com)



## Your Local Massage Therapist

**LAWRENCE MUZZATTI**

(MEMBER ATMS, BAA, BTAA)

For Therapeutic Massage, Remedial Massage,  
Shiatsu, Bowen Technique

Rebates for most Health Funds  
Gift Vouchers available

Telephone 8270-1206 Mobile 0408 011 206

## Hissey Auto's SERVICE AND REPAIRS

- Cherry Gardens and surrounding suburbs
- Most makes and models
- Passenger vehicles, 4WD & Light Commercial
- 30 years experience
- Low cost hourly rate
- All work Guaranteed
- Flexible before and after hours drop off and pick up times (by arrangement)



Call Michael  
**8388 2550 or 0417 827 428**

ABN 59 957 166 085





# Rebekha Sharkie MP

## Federal Member for Mayo

***Proudly supporting the Cherry Gardens community***

We are here to help!

08 8398 5566

1/72 Gawler Street  
Mount Barker SA 5251

[www.rebekhasharkie.com.au](http://www.rebekhasharkie.com.au)

Rebekha.Sharkie.MP@aph.gov.au

**Doing politics  
differently!**



Authorised by R Sharkie, 1/72 Gawler Street,  
Mount Barker SA 5251

# DELCO REMOVALS



Phone: (08) 8326-5333  
[www.delcoremovals.com.au](http://www.delcoremovals.com.au)

9 Hull Court  
Lonsdale SA 5160  
Email: [delco@bigpond.net.au](mailto:delco@bigpond.net.au)

- Local Moves
- Country Moves
- Weekly Service to Melbourne, Sydney, Newcastle & Brisbane
- Office Moves
- Storage with our Unique Module System
- Piano & Antique Relocations
- Pre Packing Service
- Packing Supplies
- Hourly Rate or Fixed Quotes



## CHERRY GARDENS PLUMBING

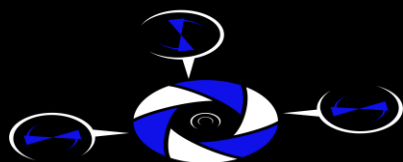
*Your Local Plumber*



- \* All Plumbing Work
- \* Blocked Drains
- \* Hot Water
- \* Gas Fitting
- \* Burst Pipes

**Phone Stephen Wood**  
**8388-2028 or 0419 807 611**

Lic 1284



# Adelaide Aerial

Local husband & wife CASA Certified Drone Operator & Video Production Company

**Let US tell YOUR Story**

Ann-Marie & Harry  
0412 843 453

ABN 603 636 157

[www.adelaideaerial.com](http://www.adelaideaerial.com)  
[info@adelaideaerial.com](mailto:info@adelaideaerial.com)