



Cherry Chatter

Incorporated by the Cherry Gardens Community Association Inc.

BUSHFIRE RECOVERY AND WAGNERS ROSE NURSERY

Recently the Cherry Chatter was contacted by a representative from the Cuddlee Creek Bushfire Recovery group with an offer from the Wagner Rose Nursery. As part of Bushfire Recovery efforts there are many organisations and companies that are available and supportive to those people who are affected by bushfires.

I am sure we all remember back to last bushfire season and the fire that started in Cherry Gardens and then Scott Creek and destroyed so much of the Scott Creek Conservation Park as well as the Mt Bold reserve. Well for those people directly affected they are still in recovery mode, and this can take many years.

The Cherry Chatter has been front and centre in supporting where we can the local community affected by the bushfire. We are in contact with the various support organisations and act on behalf of the community to keep the channels open and help with people's needs.

Wagner Rose Nursery made contact with us and offered a substantial quantity of bare rooted roses to distribute to those impacted by the Cherry Gardens bushfire. We arranged to collection of these roses from Lobethal then labelled them and dropped them off to residents in Cherry Gardens, Scott Creek and Bradbury.

While this is a small thing in the overall recovery process for those impacted it is a generous contribution from Wagner Rose Nursery that was very well received by the affected people, and we wanted to recognise their contribution and let our community know about it.

For those of you who do not know about Wagner's Rose Nursery.



Wagner's Rose Nursery is one of the largest and longest-running rose nurseries in Australia. Located in [Kalangadoo](#) on a 50 ha property in the lower South-East of South Australia, Wagner's is the agent for the main rose breeders in the world and it grows over 800 different varieties for wholesale and retail markets.

At Wagner's Rose Nursery we take great care to ensure we only sell top quality plants; each plant sold is carefully selected in a grading process done by Brian Wagner himself so that he too is satisfied that the plant meets his high expectations.

Wagner's Rose Nursery is Australian owned and operated.

This is a link to their website if you are interested to learn more about them.

<https://www.wagnersrosenursery.com.au/>

The editor

2021 CHERRY CHATTER COMMITTEE

Chair	Don Watton
Deputy Chair	Kerry Hughes
Editorial Team	Don Watton, Vicki Kirss, Emmanuelle Harrington
Secretary	Bev Watton
Treasurer/Ads	Marg Macks pmmcacks@bigpond.net.au
Newsletter	Vicki Kirss 0412 364 180
Address:	409 Cherry Gardens Rd, Cherry Gardens SA 5157
Website:	www.cherrychatter.org.au
CC Email address:	cherrychatternews@gmail.com

PLEASE NOTE OUR NEW EMAIL ADDRESS IS:

cherrychatternews@gmail.com

Articles for Cherry Chatter must be received by email to cherrychatternews@gmail.com by 5th of each month – without exception.

PLEASE TAKE NOTE

Opinions and articles printed in the Cherry Chatter are not necessarily shared by the members of the Cherry Chatter Committee.

NOTE – The Cherry Chatter Committee will not approve any controversial article for publishing unless the name and address of the author is supplied.



Please 'Like' us on Facebook

<https://www.facebook.com/92CherryChatter>

CHERRY GARDENS RAINFALL REPORT SEPTEMBER 2021

Rainfall for September 2021	67.0 mm
Rainfall for September 2020	111.6
Average rainfall for September	99.8
Rainfall to the end of September	768.6
Rainfall to the end of September 2020	842.0
Average rainfall to the end of Sept	759.7
Number days of rain for Sept 2021	16
Number days of rain for Sept 2020	15

JUSTICE OF THE PEACE

Cherry Gardens: Michael (Mike) Deare Ph 83882185
648 Cherry Gardens Road
Coromandel East: Baldev Singh Dhaliwal – Ph 82707267
Mob 0411 113 331
Mrs Vicki Hayman Ph 0405 015 411
Blackwood: Darren of Kruse Legal Ph 82781779
Office of Sam Duluk MP Ph 82785844
JP Services are available Mon–Fri 9-5

JP's work at no charge, so please CALL FIRST to book an appointment.



We can offer advice with all wildlife enquires and provide support for you. Call Bev on 0422938439 or Glenn on 8270 1169. Happy to assist where.
www.mintonfarm.org

HALL NEWS

Why not "Like Us" on Facebook to keep up to date with coming events www.facebook.com/cherrygardens/

CHERRY GARDENS

MEMORIAL HALL FOR HIRE

Available for hire for all functions, meetings & social occasions
Very reasonable rates
For bookings and more information phone 0414 824 110

Full kitchen facilities available



Laughing Llama Dance and Drama

This group is holding classes at the Hall, and they are going well. Check our Facebook page for more information.



Now available for birthday parties!

 **Laughing Llama**
Dance & Drama

WEDNESDAYS:
Little Llamas Ballet:
20 months – 3.5 yrs 9:40am – 10:25am
3 – 5 yrs 10:30am – 11:30am

FRIDAYS:
Little Llamas Creative Lab (Dance/Drama) 3 – 5 yrs 3:45 – 4:45pm

  [laughingllamadd](https://www.facebook.com/laughingllamadd) www.laughingllamadanceanddrama.com.au

SACFS CHERRY GARDENS

If you would like more information or a visit to the station, please contact Nola (0407 370 002) or Bill (0433 656 803).



SACFS AIR OPERATIONS

Region 1 Air Operations Brigade

This is the fourth instalment of the Cherry Gardens Airstrip History. Contributions are still required and will be very welcome. Contact lenkidd2@internode.on.net.

The Cherry Retardant Mixer

Although they are commonly known as "Water Bombers", in fact the aircraft are loaded with a mixture of water and certain additives. The most frequently

used for grass fires these days is foam – a wetting agent similar to those in shampoos and household detergents. In firefighting, foam increases the effectiveness of the water through increased retention on vegetation, and reduced evaporation.

Another kind of additive is called a water enhancer. We use a product named BlazeTamer 380 – a widely recognised product that was developed and is supplied by a South Australian company to firefighting organisations interstate and overseas. Water enhancers are generally more effective in scrub or forest vegetation. They adhere to vegetation better than foam and they are also heavier so they increase drop accuracy through decreased wind drift.

Retardants inhibit the ability of fuel to ignite and are placed ahead of the fire to stop or reduce its spread. They are traditionally coloured red with iron oxide so that pilots and firefighters can see where they have been laid.

Retardants were the predominant additive in the early days. They were supplied as a very fine powder in 20 kilogram plastic-lined paper bags. The earliest mixing equipment comprised a 2000 litre tank mounted on an 8x5 trailer – so called because its floor measured 8 feet (just under 2500 mm) by 5 feet (about 1500 mm). The tank was filled with water and the loaders climbed on the trailer with the retardant powder and dropped it, one bag at a time, into the tank. A mechanical agitator then mixed the retardant in the tank. Altogether, it was a slow, slippery, messy and somewhat hazardous process. A significant improvement was made at Cherry Gardens with the attachment of a continuous bucket conveyor to the trailer. This allowed the powder to be loaded into a hopper at ground level and obviated the necessity for climbing onto the slippery deck of the trailer.

This system was used for a year or two but it was no longer practical when aircraft with larger carrying capacities were introduced. For a while, the mixing process was retained with a series of 2000 litre tanks of pre-mixed retardant located at various places along the airstrip. This system did not work at all well and was short-lived largely because the premixed powder would settle out in the tank and it was almost impossible to re-mix it.

At about this time, the airstrip was lengthened by about 200 metres to accommodate the larger aircraft and loading operations were moved back up the hill to the present site. Foam became the most common additive. Retardant was just too difficult to use and it was too expensive to waste. In early 1990's dollars, it cost \$2.65 per kilogram- over \$50 a bag- and it took 10 bags to mix 2000 litres.

Nevertheless, retardant was still needed in some situations and a great deal of research went into more effective mixing equipment in use, particularly in Victoria. However, the Victorian equipment proved not much better than ours. It was still a one- batch-at-a-time system; its only real advantage being that it was bigger

and could mix enough in one batch to fill a 3000 litre aircraft.

In his day-to-day occupation, Brian Geue ran a business called Cherry Engineering and he began to experiment with a continuous mixing system. The system went through a number of configurations but in its final form it featured two pumps; one to deliver water to the mixer and another to deliver the mixture to the aircraft. Bags were stacked on a platform next to the mixer and were emptied into a hopper at the rate of one bag about every 10-15 seconds.

The machine weighed only 50 kilograms so it could be easily manoeuvred and lifted by two people. It would go through an ordinary personal access door and it fitted easily on a standard handyman (6x4) trailer. Most importantly, it was able to mix any batch size and deliver a continuous flow to an aircraft, initially at 800 litres per minute with an 11 horsepower pump and later at 1200 litres per minute with a 13 horsepower pump. Fixed quantity batches were now a thing of the past.

Fourteen of the Cherry Retardant Mixers were built and sent to various airbases around the State. Cherry Gardens crew members trained crews throughout the State in their use.

CHERRY GARDENS GARDEN CLUB

Contact Ray Wise – President 0405 273 003 or 8383-6011

Garden Club Meetings 7.30 the 2nd Monday of every month unless it is a public holiday, in which case it will then be on the 3rd Monday of the month.

Meetings will be held at the Cherry Gardens Memorial Hall for the remainder of 2021.

Three Garden Club Members each addressed the club on a topic of their choice.

Our first speaker Shelley regaled us with tales of her journey as a Junior School teacher from the 1970's until the present. Graduating from Teacher Training college at a time when new teachers were allocated their first school, Whyalla was her destination. How we laughed, felt nostalgic and gained interesting insights into the life of a young teacher. Shelley taught for years in several schools, her final full-time positions being in the southern hills. After retiring, she now TRT for 10 years, often being called at the last minute, the earliest at 4am latest being 10:30am on the day she was required. We learned some interesting tricks and strategies for harnessing the attention of rowdy or excited children and about the cunning and comprehensive lesson encompassing, English, Maths, History, Science and Commerce which Shelley keeps up her sleeve in case no instructions are left or when she ends up with a huge year seven class when expecting a much younger smaller class. No wonder Shelley is never short of repeat requests from schools where she is known.

Kath's colourful digital presentation prepared by her South African niece on Gardening in Southern Africa (Kath's birthplace). Although smaller than NSW South Africa has 9 climatic zones the same number as the whole of Australia. The wildflowers of the Western Cape and Namaqualand are a famous international tourist destination. The narrow Western strip of cold desert has 2,000 species of Wildflower flowering in Spring, more than any other desert region wildflower park of its size in the world. Due to the diverse, dense and accessible climatic zones Southern Africa has 900 species of birds, 200 more than those all of Australia.

After looking at Nature's gardens we watched the development, maintenance, challenges and joy of the rural flower, fruit and vegetable garden of her sister-in-law in the lush, dairying foothills of the Drakensberg. This area experiences vicious tropical storms in Summer, producing annual rainfall around 60 inches a year, and many fallen trees. Pictures of the early morning thickly frosted yet dry also sunny day time winter garden, sometimes even covered in snow, contrasted with hot wet humid summers reflecting the ideal growing conditions. This gracious large garden contrasted with the no less amazing, Chatham, Cape Town shack town community garden, established by Kath's nephew and aimed at assisting and teaching locals to produce food and fynbos (heather) beauty for the shack and lower socio-economic residents.

Pauline presented a fascinating, comprehensive, pictorial record of the attainment after many years hard work, of their dream to establish a food producing garden and orchard on a gorgeous, very steep property in picturesque Coromandel Valley. Really brave, innovative ideas were used to cater and compensate for the steepness of the land, the shallow top soils on limestone and bluestone, and the abundance of hungry bird and wildlife. This huge effort has resulted in a lush, terraced marvel. Eco Wood vegetable beds with custom built shade cloth covers, produce an abundance of vegetables. A netted, varied orchard produces more fruit than needed. Recycled materials and innovation have contributed to an excellent hot house with one solid brick wall, cleverly positioned specifically to capture the sun rays and act as a heat bank. The pneumatically operated, venting windows, which allow the hot air to escape thus cooling the glass house in Summer, were imported especially from the UK.

Display plants were a magnificent Peony grown by Denise Callus.

NEXT MEETINGS

Monday November 8th – Prof. Chris Daniels will be our Guest Speaker talking on native wildlife. Kangarilla Floral Art and Garden Club have been invited.

Sunday 5th December will be our Christmas lunch.

GEORGE'S GARDENING SUGGESTIONS FOR NOVEMBER 2021

How often have you forgotten the name of a special plant, tree or shrub you have in your garden? Often you will have had the label which came with the purchase of the above but over time they fade so much they can't be read, or maybe it did not have a label to begin with. For something more permanent you could try scratching the name onto a piece of aluminium or even stainless steel. If you have an engraver it would be way more permanent and also opens up the possibility of using a piece of PVC pipe

Clivias are a showy plant for dry shady spots in your garden and now is the time to divide or transplant them. Water them well in their new home but leave off fertilizing them till early next year. Established plants will respond to a feed of general purpose fertilizer.

Bearded iris too, can be divided once the flower stalks have died down. Plant them with healthy rizomes just above the soil level.

Lavenders will respond well to a light clip at this stage, so too will daisies.

Continue to harvest strawberries to encourage more fruit set and continue with fortnightly feeds of liquid fertilizer.

Before the really hot weather sets in make your last planting of summer vegetables.

OVER THE STABLE DOOR with Hamish



Greetings Fellow Equines and Horse Owners!

Although most of us welcome spring, it comes with quite variable times! Fine and sunny one day, then the temperature plummets and the rugs are back on.

Assuming the horse is in good condition and healthy, no rug is the preferred option. However, if the horse has a bit of age or is confined for some reason and unable to move around, then a rug may be needed. As I have said many times before, keep an eye on those lovely spring grasses, as they are full of sugar. Limiting the amount of access to new pastures may be needed, as well as keeping up that intake of plain meadow hay. The general rule of thumb is that 1.5 to 2% of the body weight is needed for a horse in light work. Of course, we treat each horse as an individual and other factors come into play such as general health, age, breed and amount of work and time of year. So 2% of a 500kg horse is 1/50, which is 10kg. That is a dry weight. It is an interesting experiment to weigh the hay, as each bale can vary quite considerably, so one batt from one bale may be equivalent to 2 batts from another. Horses are super

adaptable, but they also need time to adjust, so any changes to feed should be gradual, at least over a period of a week to 10 days. Knowing what your horse weighs when in normal condition is a good start. If you don't have access to scales, then a weight tape (can be purchased from fodder or horse stores) comes in handy. They are usually accurate to within 20kg or so, but it is the *change* in the weight which is important. My owners usually weigh me around 4 times a week as I tend to be on the cuddly side. This time of year I am at my lowest weight and feeling pretty good (470kg). This equates to about 3/5 on a condition score. There have been times when I have ballooned up to 520kg! This is not good as this makes me prone to founder. General physical signs of this obesity include an 'apple' bum, where the spine is actually a groove looking from behind, rather than a smooth indentation, a cresty neck which tends to feel hard (or even lumpy) and cellulite looking lumps over the already rounded parts of the body. This is a time to act quickly, as the next stage could move into laminitis. The onset could be in just a matter of a couple of hours, so again, it pays to be vigilant, especially at this time of year.

A short mention of the new paddock girl. A worm count was done (oh and by the way, all horses were done at the same time) 3 weeks after the worming. A zero count was returned in all horses. A follow up will be done next year in the early autumn. Not much progress apart from a little more work in hand and a few quiet rides. She is an absolutely blank sheet, with no idea of 'go' or turn. She does have a stop button and she is learning to park when being mounted. More work in hand needs to follow up to consolidate those basics. She is quiet to bridle and saddle up, so things are ticking over quite nicely, no rush!

Till next month, Hamish

CHERRY CHURCH

Cherry Gardens Church
87 Hicks Hills Road, Cherry Gardens

Services held on Sundays at 9.30am
Chairperson: Rob Linn 0407971650



'The Spirit himself testifies with our spirit that we are God's children. Now if we are children, then we are heirs – heirs of God and co-heirs with Christ, if indeed we share in his sufferings in order that we may also share in his glory.'
Romans 8: 16–17

We are so fortunate to live in a community where many believe in serving others. Nothing was more apparent than this earlier in the year, during and in the aftermath of the fires. The CFS were nothing short of amazing. Then there are those who assist our community with the Hall, sporting clubs, Landcare groups and wider activities. It is incredible how many are involved.

Geoff Bingham, who lived on Ackland Hill Road for some forty years, learned about the true nature of community while he was in Changi and Kranji POW camps, on Singapore Island, during the Second World War. Lately, I have been reading again Geoff's war memoirs, *Love is the Spur*, which documents the tragedy of the War and POW experiences, but also highlights how, in the midst of real human horror, some of the prisoners learned the truth about love and community.

Geoff wrote, 'A true community, however, is one which grows not by absorbing or assimilating but by seeking to serve others and seeing them as beloved friends. The community of Christ does not seek to emphasise itself as something different, rather, it is the community into which all can come and find themselves fulfilled in their relationships with both God and Man.'

Unfortunately, we will not be able to hold a Community Carols event this year, due to the continuing uncertainty with regulations for covid-19. We are hoping to be able to put on a special service of Lessons and Carols and will advise more on the subject.

As a place of Christian worship, the Cherry Church and its lively congregation welcomes everyone to drop in. Sunday morning worship is held each week at 9.30 am, followed by a cup of tea. Please come and join us, we'd love to see you.

Throughout the Bible there are many references to the natural world and the emergence of new life. They are often given as reminders that out of difficulty and dark times God provides a renewal of hope and love. That is the central story of the death and resurrection of Jesus – a renewal of hope, love and life for all people.

As a place of Christian worship, the Cherry Church and its lively congregation welcomes everyone to drop in. Sunday morning worship is held each week at 9.30 am, followed by a cup of tea. Please come and join us, we'd love to see you.

Cherry Gardens Church
87 Hicks Hills Road, Cherry Gardens
Services held on Sundays at 9.30am – and all are welcome
Chairperson: Rob Linn 0407971650

FRIENDS OF SCOTT CREEK CONSERVATION PARK



As Scott Creek Conservation Park continues to recover from the January fire, the Friends group has had the privilege of seeing some terrific spring floral displays, particularly with the many native lilies and orchids that survived the fire and produced new growth from their underground tubers. We are also seeing the return of a number of species of our precious wildlife.

We remind people that the park east of Dorset Vale Road is still closed to the general public, but the Friends group has received special permission to undertake their scheduled activities in the burnt area.

Replacement of damaged fencing and other infrastructure is taking place at present, and will hopefully be completed by December. It is expected that will be the time that the park is re-opened.

Anyone wanting to find out more or help out, or simply wanting more information about the Friends of Scott Creek CP, can contact us on info@friendsofscottcreekcp.org.au or visit our website www.friendsofscottcreekcp.org.au. You can also follow us on our Facebook page www.facebook.com/friendsofscottcreekcp where you will find up to date information about our activities, including photos of the park's diverse flora and fauna.

November

Tue 2	Bushcare
Sat, Sun 6, 7	Bird banding
Tue 9	AGM
Sun 14	Bushcare
Sat, Sun 20, 21	Bird banding
Sat 27	Bushcare



Yellow-tailed Black Cockatoo feeding on the flowering spike of a Yacca



A spectacular display of flowering Black Fire Orchids

Prepared by Thalassa Ward Cr Marion Themeliotis.

If you have any local issues you would like me to follow up on or require any assistance with Council, please do not hesitate to contact me.

Mobile: 0413 747 351

Email: marion.themeliotis@onkaparinga.sa.gov.au

Facebook: [facebook.com/Cr-Marion-Themeliotis-City-of-Onkaparinga-Thalassa-Ward](https://www.facebook.com/Cr-Marion-Themeliotis-City-of-Onkaparinga-Thalassa-Ward)

SAVE THE DATE

The Happy Valley Reservoir will open to the community on 11 December 2021 for the first time in more than 120 years.

You'll be able to kayak, fish, picnic, ride, run or stroll along the 20-kilometre trail network, which will take people along the water's edge, through a pine forest, native flora, and open grassy areas. See the map in the comments for details.

Visitor amenities will include two kayak launch areas, car parks with trailer and kayak drop-off facilities, picnic settings and shelters, and a boardwalk jetty and lookout offering stunning views over the water.

Adelaide has been recognised as the third most liveable city in the world and this beautiful green, open space will further enhance our reputation.

www.reservoirs.sa.gov.au/reservoirs/happy-valley-reservoir

Master Plan:

<https://www.reservoirs.sa.gov.au/?a=376721>

COMPOSTABLE DOG CLEAN UP BAGS

For information, as part of the state governments new single use packaging and disposable bag laws, the oxydegradable (black) bags are being phased out and cannot be used after 1 March 2022. We are in the process of replacing the black bags with compostable bags across all of our dispensers.

We are aware of durability issues with the current batch of compostable bags and these have been raised with our supplier.

We have also contacted alternative suppliers who are sending us sample rolls of their compostable bags for us to compare. Should they turn out to be a hardier and still meet the compostable bag requirements then we may switch to a new supplier.

Once we've confirmed the best source we will work with our waste team on education about the new bags.

NEW FACILITIES AT FLAGSTAFF

Recreation facilities are being upgraded at the Flagstaff Hill Sports Ground.



Flagstaff Hill sporting clubs and local residents are happy to be putting the highly anticipated new and improved sport and recreation facilities to use at the Flagstaff Hill Sports Ground.

The upgrades are supported by more than \$1.1 million from the City of Onkaparinga, together with \$500,000 from the state government and \$400,000 in federal government funding, secured by the Flagstaff Community Centre. Council has also allocated more than \$90,000 towards the upgrade of the cricket facilities thanks to federal government funding through the Local Roads and Community Infrastructure Program.

The improvements made to the sports ground to date include installation of a new unisex modular changeroom facility, new fully enclosed cricket practice nets, rebuilding two hard courts and resealing another four courts, refreshing two playgrounds, and designing and installing services infrastructure, paving, fencing and landscape works on the site.

A significant refurbishment of the main shared clubroom building is also currently being designed in collaboration with club representatives and will begin construction in early 2022.

The new changerooms were officially opened by City of Onkaparinga Mayor Erin Thompson, Flagstaff Community Centre chair Steve Murray MP, Member for Davenport, and Corey Wingard MP, Minister for Recreation, Sport and Racing, at the Flagstaff Hill Football Club's last home game of the season in August. Mayor Thompson acknowledged the hard work, patience and persistence of everyone who's been involved with the upgrades to date, particularly the Flagstaff Community Centre board and club presidents who've worked closely with council across all projects.

"It's rare that we get the opportunity to upgrade a whole sports park, but that's just what we've done here," she says.

Flagstaff Hill Football Club President Neil Williams is enthusiastic about the upgrades and the potential boost in sport participation that the new unisex changeroom facilities will enable.

"The upgrades are exciting for the local community. It's been a long time coming, but people can see a lot happening now," Neil says. "The new unisex changerooms have been built with women footballers in mind so they don't feel like they're using men's changerooms."

Revitalisation of the clubroom in 2022 will make it more functional for the multiple club

and community users. New bigger fridges are being installed, and a canteen food preparation area will give volunteers more room during busy periods.

"The bar currently cuts into the middle of the room, so we're turning it around to create more open space. It will help us to accommodate more guests and meet social distancing requirements as needed," Neil says.

Ross Kauschke has been president of the Flagstaff Hill Tennis Club for 12 years and part of the upgrade project since its early days in 2017–18.

"Our two dedicated tennis courts were previously unsafe for our matches. Now they are up to standard, and they look great," Ross says.

The Flagstaff Hill Cricket Club has had a couple of interrupted seasons because of the works around the ground, but President Steve Cope is optimistic about the summers ahead.

"It's been a long process to get to where we are now with the facilities, but it will be fantastic when the works are complete," Steve says.

More information

flagstaffcommunitycentre.com.au

yoursay.onkaparinga.sa.gov.au



RECOGNISE AWESOME **NOMINATE A LEGEND**

2022 AUSTRALIA DAY AWARDS

These annual awards recognise local individuals and groups who have made outstanding contributions to our communities.

Nominations close Wednesday 10 November 2021.

onkapingacity.com/australiaday



ONKAPARINGA BUSINESS AWARDS 2021

recognise & celebrate local businesses

Recognise and celebrate the success of businesses within the region.

Vote for your favourite local business and go into the draw to WIN a \$100 voucher!

Voting closes on Wednesday 10 November.

gosouthglocal.com.au/awards



MAYOR ERIN THOMPSON'S

CHRISTMAS LIGHT DISPLAY

Competition

Entries now open

Best house • Best street

Entries close Friday 26 November

onkapingacity.com/awards



'TIS THE SEASON... TO SHOP LOCAL

CHRISTMAS GIFT GUIDE

gosouthglocal.com.au/christmas

Renee's Nails



CHERRY GARDENS
Ph. 0403 807 038

- Waxing
- Tanning
- Manicures
- Pedicures
- Acrylic Nails
- SNS Nails
- Shallac

*\$5 off your first appointment
when you mention this ad.
Hope to hear from you soon.*

FRITH AUTOMOTIVE

*For all your
Tyre & Battery needs*

Contact Peter Frith
Phone (08) 8388-2263
Mobile 0429 690 726

frithautomotive@bigpond.com

443 Frith Road
Corner of Mahar and Frith Roads
CHERRY GARDENS SA

AQUARIUS WINDOW CLEANING

- SHOPS
- OFFICES
- HOMES

LOCAL & RELIABLE

Phone GARY on:
0438 693 104
or **8270-6038**



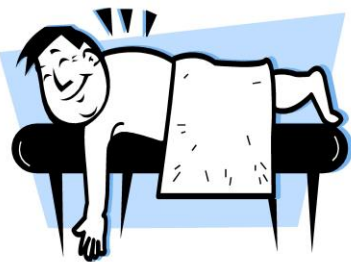
Four Seasons Yoga

For Every Body, For Every Season

*Group Classes
Private Lessons
Sports Clubs
Schools
Corporate*

First Lesson Free

Contact: Megan Kuchel
Ph: 0418 807 703
fourseasonsyoga@outlook.com.au
www.fourseasonsyoga.com.au
62 Edialta Road, Cherry Gardens



Your Local Massage Therapist

LAWRENCE MUZZATTI

(MEMBER ATMS, BAA, BTAA)

For Therapeutic Massage, Remedial Massage,
Shiatsu, Bowen Technique

Rebates for most Health Funds
Gift Vouchers available

Telephone 8270-1206 Mobile 0408 011 206

Hissey Auto's

SERVICE AND REPAIRS

- Cherry Gardens and surrounding suburbs
- Most makes and models
- Passenger vehicles, 4WD & Light Commercial
- 30 years experience
- Low cost hourly rate
- All work Guaranteed
- Flexible before and after hours drop off and pick up times (by arrangement)



Call Michael
8388 2550 or 0417 827 428

ABN 59 957 166 085



Rebekha Sharkie MP

Federal Member for Mayo

Proudly supporting the Cherry Gardens community

We are here to help!

08 8398 5566

1/72 Gawler Street
Mount Barker SA 5251

www.rebekhasharkie.com.au

Rebekha.Sharkie.MP@aph.gov.au

Authorised by R Sharkie, 1/72 Gawler Street,
Mount Barker SA 5251

**Doing politics
differently!**



DELCO REMOVALS



Phone: (08) 8326-5333
www.delcoremovals.com.au

9 Hull Court
Lonsdale SA 5160
Email: delco@bigpond.net.au

- Local Moves
- Country Moves
- Weekly Service to Melbourne, Sydney, Newcastle & Brisbane
- Office Moves
- Storage with our Unique Module System
- Piano & Antique Relocations
- Pre Packing Service
- Packing Supplies
- Hourly Rate or Fixed Quotes



CHERRY GARDENS PLUMBING

Your Local Plumber



- All Plumbing Work
- Blocked Drains
- Hot Water

0419 807 611

PGE233271

JEFF BURTON

Vicks Road,
Cherry Gardens

PHONE: 8388-2268

Mobile:
0410 533 268



- Earthmoving
- Excavating
- Driveways
- Trenching
- Shed & Tank Sites
- Footings
- Soakage Trenches
- Stumps Removed

BACKHOE HIRE

GOING ON HOLIDAY?



HAPPY PETS

*At home care for all you pets
– including horses.*

I visit your pet in it's own home

Ex - Veterinary Nurse

Phone 8358-6560
or 0405 775 250



CARLING ELECTRICAL

Electrical
Contractors

M: 0404652862

carlingelectrical@gmail.com

www.carlingelectrical.com

- Domestic/Commercial
- Property Maintenance
- Outdoor Entertaining
- Landscape Lighting
- Pool/Spa/Sauna
- 24 Hours

FOR ALL YOUR SEPTIC, GREASE TRAP, PORTABLE TOILET, LIQUID WASTE & EMERGENCY PUMP OUT NEEDS

Knowledgeable, Quality Service
30+ Years Experience
Adelaide Hills based, servicing all Hills and Adelaide areas
Family owned & operated



CALL NOW 0411 30 20 25

WWW.ADELAIDEHILLSSEPTIC.COM.AU

Hills All Seasons Property Maintenance

- ✓ General garden maintenance
- ✓ Handyman repairs ✓ Gutter cleaning
- ✓ Property clearing ✓ Lawn mowing

Locally owned & operated

- Great rates -

Phone Mark for a free quote on

0433 407 853



Photography services - across the
Adelaide Hills, Fleurieu Peninsula,
Kangaroo Island & South Australia
individual & family portraits
events & celebrations, pets & livestock
commercial & private, landscape & real estate
wild-life & flora, vehicles & machinery

Obligation free quote

PhD Photography – 0410470309

www.phdphotography.com.au – paulh@phdphotography.com.au



Dr Greg Rodda BVMS, BSc
Dr Sarah Tomlinson BVSc & Dr Rachel Penn BVS DVM
Dr Jane Sheehan BVSc MSc

“Providing professional, friendly care to all creatures great and small”

Incorporating our “Woofs and Whiskers” pet grooming and “Meadows Mews” cat boarding.

Special interest in Equine Dentistry and Reproduction including Frozen & Chilled Artificial Insemination

Please visit our web site www.meadowsvet.com.au or
find us on Facebook www.facebook.com.au/MeadowsVetCentre
Email: admin@meadowsvet.com.au

2 Battunga Rd Meadows SA 5201 **PHONE 8388-3455**

24 HOUR EMERGENCY SERVICE AVAILABLE

MOONS EARTHWORKS & FOUNDATIONS

SPECIALISING IN –

*GENERAL EARTHWORKS, FOOTINGS & FOUNDATIONS, CONCRETING OF SHEDS AND
DRIVEWAYS*



TRACKED SKID STEER, BOBCAT, EXCAVATORS & TANDEM TIPPER



LOCAL TO CHERRY GARDENS AREA

PHONE SCOTT on 8270 – 8270

BLD232706



Increase Your Profit With Our Three Step Marketing Plan

0447 312 218 | valerie@timmsrealestate.com.au

Valerie Timms



HORSE STABLES & SHEDS

- Extensions & Alterations.
- Steelwork.
- Repairs to: Roofs, Gutters, Stockyards.
- Site - Welding.
- Concrete Tank Roofs.
- Carports & Verandahs.

Lance Hart

Phone (08) 8388-3516 /FAX (08) 8388-3716

Mobile: 0411 551 750

LIC NO BLD: 165324

FREE FLOW PLUMBING

Commercial - Domestic - Events - Hospitality – Rural
Plumbing - Gas Fitting - Roofing & Guttering

Commercial Fit Out * Complete Bathroom Renovations * Drain Cleaning (electric & jetting)
* Hot Water * Programmed Maintenance * Pumps
Rain & Mains Water Replacement & Repairs * Septic & Sewer Replacement

Call Brett M: 0438 314 122 (24hrs/7days)

Cherry Gardens Road, Cherry Gardens. BLD 211915 / PGE 7292



Treetops

Bookkeeping and BAS Services

Contact Naomi on 0411 039 200

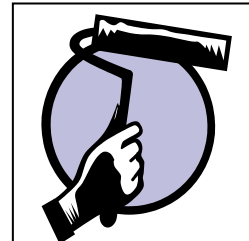
Cherry Gardens Road, Cherry Gardens

- Certified in Xero and MYOB
- General bookkeeping
- BAS Preparation and Lodgement

naomi@treetopsbbs.com.au

David J O'Ryan

Painting & Decorating



Interior / Exterior Painting

Paper Hanging & Stripping

Free quotes anytime

No job too big or small

Phone 8278-4364

Mobile 0415 347 329

djopainting@hotmail.com

Lic No BLD201369

Mobile Accountant

Tax Returns - GST - Accounting -SMSF

Steve Sherrah

Chartered Accountant

P 0419 854 982

E steve@mobileaccountant.net.au

www.mobileaccountant.net.au



PO Box 452

Blackwood SA 5051



Proudly since 1983, Blackwood Tree Services established team are the unsung heroes of safer backyards, schools and parks throughout the Blackwood Community

- Tree Removals
- Tree Maintenance
- Tree Pruning
- Tree Stump Removal
- Storm Damage Tree Services

Your Tree, Our Passion

Please call us on (08) 8278-2538
or 0419 867 724

E: blackwoodtreeservice@yahoo.com
W: www.blackwoodtreeservice.com.au



Kruse Legal

Wills and Powers
Deceased Estates
Family Law
Cyber Law

Telephone 8278 1779



TIM SMILES
TREE CLIMBING

- Drop trees or trim
- Professional climber
- Fully insured
- Local to Hills
- Friendly & reliable

Call Tim on
0423361704 or 73294426

ABN:67358757113



STEVE MURRAY MP
MEMBER FOR **DAVENPORT**

Local like you!

Here to help.

Office: Shop 11, Hub Shopping Centre

Post: PO Box 3020, Aberfoyle Park SA 5159

Ph: 08 8270 5122

E: davenport@parliament.sa.gov.au

Facebook: /SteveMurrayDavenport

JP Service: Available 9:30am-4:30pm, Monday to Friday



TRACKLOADER



TANDEM TIPPER HIRE



SKID STEER LOADER



EXCAVATOR

GENERAL EARTHMOVING AND EXCAVATION

STILL AVAILABLE FOR WORK IN THE CHERRY GARDENS AREA

- * House sites
- * Horse Arenas
- * Driveways
- * Tennis Courts
- * Tank and Shed Sites
- * Fire Tracks
- * Surplus Filling Removed

Neil Schubert – 8383-7387 or 0413 280 513

Lic. No. SR41157

**BLACKWOOD
HIRE
8370 2488**

"Your Ultimate Toolbox!"

- Trailers ■ Party Hire ■ Heavy Duty Lawnmowers
- Garden Equipment ■ Mulchers ■ Lawn Maintenance Equipment
- Portable Toilets ■ Plate Vibrators ■ Rollers ■ Concrete Mixers
- Rotary Hoes ■ Hole Diggers ■ Horse Floats ■ Dingo Mini Diggers and much more.....

OPEN 7 DAYS

76 Main Rd, Blackwood. Ph: 8370-2488



197 Main Road
Blackwood

Janet@bcps.net.au
David@bcps.net.au

8370 3344

PRINTING

- All general business printing & design
- Light Signage, foamcore, corflute, vinyl banners
- Large format printing for Outdoor or Indoor - posters, school, uni, home, photos, plans

STATIONERY

- General business stationery and office supplies

PRINTER CARTRIDGES

- Genuine & Compatible Cartridges
- Inkjet & Laser / Toner
- Large range of Printing Papers

STEVE BOWDEN

Outdoor Home Improvements

Builders Lic No. RL23784

- * Pergolas
- * Carports
- * Timber Decks
- * Verandahs



**667 Ackland Hill Road
COROMANDEL EAST SA 5157**

Phone 8388-2018 or 0412 392 171



THALASSA WARD

Cr Geoff Eaton

Geoff.Eaton@onkaparinga.sa.gov.au

Cr Marion Themeliotis

Marion.Themeliotis@onkaparinga.sa.gov.au



**CHERRY GARDENS
MEMORIAL HALL FOR HIRE**

**Available for hire for all Functions,
Meetings and Social Occasions.
Very Reasonable Rates
For bookings and more
information phone 0414 824 110**



**COROMANDEL
LANDSCAPING**

- ✓ Stone and Retaining Walls
- ✓ Water Tank Installations
- ✓ Irrigation, Drainage, Storm Water
- ✓ New Lawns and Lawn Renovations
- ✓ Garden Clean-Ups and Makeovers

**Gavin Patterson
Mobile: 0404 109 919**

License BLD283817

SANDERSONS

SINCE 1930

Grain | Fodder | Pets | Garden | Rural Supplies

Now offering FREE DELIVERY to your area*

* Mention this ad. Conditions apply.

Phone 8270 2173 | vikki@sandersons.com.au | 432 Main Road, Coromandel Valley, SA 5051



SUMMIT GLASS

Contact Gavin on 0418 842 879

650 Cherry Gardens Road Cherry Gardens

Specialist in all your glazing needs:

- Broken Glass Replacement
- Glass Splashbacks
- Frameless or Semi-Framed Showerscreens

www.summitglass.com.au



Firewood Supply, mobile
hydraulic wood splitting & sawing.

Dave Harris: 0421046760

hpsfirewood@gmail.com

Harris's Property Services

Police checked, Working with Children
Checked, Fully Insured, GST registered
ABN 72880310822

Rural, Domestic & Commercial Property Maintenance:

Tree care - pruning, loping, removal, stump grinding,
Firewood – we can cut & split your timber for you.
Brush-cutting and Bushfire preparation, blackberry spraying.
Acreage slashing –(zero turn 6ft deck mower available), lawn
mowing, whipper snipping, edging, fertilising, lawn
installation, weeding and general lawn care
Waste and Junk removal (Green, hard, scrap, any)
Pressure washing – all surfaces.
Shed, Yard, Property & Deceased Estate clean-ups.
Labouring and general property maintenance
Testing and Tagging of electrical appliances,
Irrigation repairs and installation
How can we help you maintain & improve your property?

Jo Palfreyman Hairdressing

Now working from

Tailored Hair Design

Waite Street, Blackwood
Phone: 0401 865 949

**SEE YOUR
ADVERTISEMENT HERE**

Contact Cherry Chatter if you
would like to see your
business ad here



Peter Alexandrou
Property Consultant
0412 833 501
petera@harrisre.com.au



Matthew Tuck
Property Consultant
0402 994 677
matthewt@harrisre.com.au



Kristy Dundon
Property Consultant
0422 645 867
kristyd@harrisre.com.au



Sarah Stewart
Property Consultant
0433 594 235
sarahs@harrisre.com.au



TYREPOWER BLACKWOOD

*'Proudly servicing the
Cherry Gardens Area'*

t: (08) 8370 2195 205 Main Road
f: (08) 8370 2954 Blackwood, SA 5051

t: blackwood@tyrepower.com.au
w: www.tyrepowerblackwood.com.au

Visit us today at 208 Main Road, Blackwood

HARRIS

RLA 226409
harrisre.com.au