

Cherry Chatter



Incorporated by the Cherry Gardens Community Association Inc.

EDITORIAL

It was very pleasing to see a large contingent of senior football and netball players turn up the Cherry Gardens ANZAC Day service and breakfast. They joined an estimated 500+ at the service and then around 350 of these people made their way to the Hall and enjoyed the BBQ breakfast. Being the 100 year anniversary of the ANZAC landing the Cherry Chatter group had a replica of the original WWI Honour Board that is hung in the Cherry Church made and it was dedicated during the breakfast at the Hall. At the Hall a number of the football and netball players joined in the dedication by reading out the names of all the locals that served during WWI along with a brief description of their service. A special reading that reflected on the service of those men that paid the ultimate sacrifice preceded the dedication. It was particularly poignant that many of the football players that did the reading were of a similar age to those men that served, and for 13 of these soldiers, that died in service to our country.



There was one woman from Cherry Gardens that served as a nurse during the WWI. Her name was Anne Donnell and she was one of the first nurses from South Australia

to offer to work as a nursing sister for the Australian Army Nursing Services and she embarked almost immediately and arrived in Egypt and then Lemnos where she cared for the soldiers wounded at Gallipoli. Following the evacuation of Gallipoli she went to Abbassia in Egypt then for the remainder

of the war she served in France.

Anne kept a diary throughout the war and one of her entries recollects the first ANZAC Day service in Egypt.

"There was a memorial service at 9am at the Anzac Hostel in Cairo. After the service there was a procession to the Cairo cemetery and the flowers were taken and placed on the soldier's graves. I glanced up and saw one young laddie quite overcome in the gallery, but sad as it all was, one came away with the feeling of being drawn much nearer to those who gave their lives twelve months ago, that they were richer by far, and that their deeds are a lesson for all time."

The Cherry Gardens community would like to express their gratitude to Steve Gruber, Jason Hughes and Ritchard Bonnett for their time and dedication in making the replica WWI Honour board that now hangs in the Memorial Hall. Their attention to detail has created something we can all be proud of.

We would also like to apologise to those who attended the ANZAC Day service and were not able to hear the service clearly due to the PA not being turned up loud enough. We will be taking steps next year to correct this situation and ensure that everyone will be able to hear the service no matter where they stand.

Don

CONTENTS

Editorial
CC Meeting
Rainfall
Letters to the Editor
Community News
Justice of the Peace
Hall News
Birthdays
Over the Stable Door
CFS News
Church News
Garden Club
Welcome Pack
Local Sport News
Advertisers

RAINFALL REPORT

Rainfall for April 2015	110.6
Rainfall for April 2014	57.8
Average Rainfall for April	71.2

Rainfall end of April 2015	181.4
Rainfall end of April 2014	192.4
Average Rainfall to end April	166.9

CHERRY CHATTER COMMITTEE

Chair	Don Watton
Deputy Chair	Peter Macks
Editorial Team:	Don Watton, Paul Heck
Secretary	Bev Watton
Treasurer/Ads	Margaret Macks - pmcmacks@bigpond.net.au
Newsletter	Paul Heck 0410470309 Vicki Kirss 83882261
Postal Address:	409 Cherry Gardens Rd., Cherry Gardens SA 5157
CC email address:	cherry chatter@yahoo.com
Website:	http://cherry chatter.org.au

NEXT CC MEETING

Next meeting will be held on Wednesday
June 10th at the Macks
Articles to be received 5th of each month

PLEASE TAKE NOTE:-

Opinions and articles printed in the Cherry Chatter are not necessarily shared by all members of the Cherry Chatter Committee.

NOTE – The Cherry Chatter Committee will not approve any controversial article for publishing unless the name and address of the author is supplied.

JUSTICE OF THE PEACE

Cherry Gardens: Michael (Mike) Deare, Ph 83882185
648 Cherry Gardens Road
Coromandel East: Mrs. Vicki Hayman - Ph 83707883
Baldev Singh Dhaliwal - Ph 83705048, Mob 0411 113 331
Aberfoyle Park: SA MP Nat Cooke Office Mon, Wed, Fri - 11 to 12
2 to 4 only Phone Ph. 8270 1874
Blackwood: Darren of Kruse Legal - Ph 82781779

JP's work at no charge, so please call first to book an appointment

LETTERS TO THE EDITOR

I attended the Anzac Service at Cherry Gardens. Although I no longer live in Cherry Gardens I did for 60 years, my father's brother is remembered on the Memorial at the Park, which, especially after the improvements there in recent years, is a fitting place to remember those who gave so much. As a mark of respect I think it would be appropriate for traffic to be restricted during the service. Surely it would be possible to close the road to traffic

for the relatively short time the service takes. Quite a number of noisy vehicles went past during the service, and I don't think that respects the occasion.

Kaye Baxter.

GARDEN CLUB

Meetings are held at the Uniting Church meeting room, 87 Hicks Hill Road Cherry Gardens at 7.30pm usually on the 2nd Monday of the month. Other excursions and garden visits occur on an ad-hoc basis.

Supper is provided and we have lucky door prizes. Visitors are most welcome.

Contacts are:- Ray 8383-6011 or Shirley 0403 801 916

NEXT MEETING will be on Monday June 15 (third Monday due to Queen's birthday holiday) it will be our **WINTER WARMER** where we start at 6.30 for a meal of soups and crusty bread, then some delicious slices for dessert, followed by some interesting photos of our trip to Singapore last year.

GEORGE'S GARDENING SUGGESTIONS FOR JUNE

Winter is a great time to catch up on a few maintenance jobs with regard to your gardening tools. Secateurs and loppers can be cleaned, sharpened and

oiled in readiness for intense pruning next month. Tools with wooden handles will benefit from a rub down using some abrasive paper and then a good application of oil to help preserve the timber (I use a mixture of linseed oil and turps), of course only carry out this task when the timber is quite dry. The cutting edges of tools can be brought back to a serviceably sharp condition with a fine file. Stone fruit trees can be sprayed with a copper based spray as soon as they lose their leaves - this needs to be followed up just before bud-burst in Spring. Do it on a calm day without forecast rain.

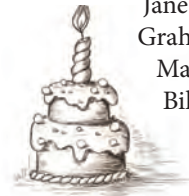
Feed veggie and flower seedlings every 2 weeks with a liquid fertiliser high in potassium for strong growth.

Keep on top of weeds especially around young plants as they can easily out compete for light and nutrients. Snails will be on the march -- stop them dead in their tracks.

HAPPY BIRTHDAYS

June

Margy Pillar
Gill Sims
Jenni Edwards
Jim Powell
Marguerite Smith
Jane McCarthy
Graham Dellow
Martin Weir
Bill Semple



COMMUNITY NEWS

Remember to check out what's on at the Coromandel Community Centre by visiting their website: www.communitywebs.org/CoromandelCommunityCentre/ For information on Coromandel Valley history, events and more, go to; www.coroalive.org.au, Trevor Conlon - Ph 8270-5686 or David Wyatt Ph 8270-4400



Spotlight on Cherry Gardens

Friday 29th May at 7:30pm at the Cherry Gardens Hall

The Cherry Chatter in cooperation with the Coromandel Valley National Trust are holding the second "Spotlight" on Cherry Gardens History evening on Friday 29th May at the Cherry Hall. Starting time is 7.30pm and there is a supplied supper as well as some interesting speakers who will share their recollections of history snippets about Cherry Gardens. Some of the information you can expect to hear will be about local families, what the district was like in the early years as a farming community, Minton Farm, the founding of the CFS etc.

Everyone is welcome to come along and just listen or if you feel the need please share your recollections and thoughts.

OVER THE STABLE DOOR

Greetings Fellow Equines and Owners! Heading into winter now, with that flush of lush green grass. From now on til early Spring, this is definitely danger time for colic, especially of the impaction type. It can affect all breeds of horses, but especially those of a 'rounder' body type (like yours truly), pony types, older horses or those who just seem to be prone to this, or who have had it before. Owners need to be aware of any changes of what they recognise as normal behaviour in their equine. A sudden increase in frequency in lying down, restlessness, looking at their sides, pawing – these are the most common indications that something is going on and that you need to address it **IMMEDIATELY**. You may need to call in the vet, but meanwhile, remove the horse/pony from the paddock and either yard or stable while you wait.

In winter, there are 3 main areas to address, namely (and always first), ad lib access to clean fresh water, plenty of fibre and essential nutrients. One of the reasons that impaction colic arises, is that as the temperature drops, the horse consumes less water, we feed him hay (much lower water content 10%, compared with pasture – 80%) and he will drink less. This means that he actually becomes dehydrated. If



possible avoid him drinking freezing cold water. An ideal is a combination of both hay and pasture. That way, he gets his water content from pasture, normal water supply and the all essential fibre from his hay. When he eats the hay, the process of digestion and fermentation generates heat and keeps him warm, unlike his hard feed (pellets, grain etc) which does not.

Most of you may notice too that in autumn, when the paddocks are well and truly grazed out, that your equine will drop off, or lose some weight. This can be quite crucial in the older horse as he will not be able to replace that weight as quickly as his younger counterpart. Again, additional hand feeding may be necessary. The safest remedy for weight gain usually is plenty of hay, but if after a couple of weeks there is no noticeable change, then maybe a

better quality hay is needed. Lucerne contains 2 essential elements in a horse's diet, namely calcium and phosphorous. With the larger horse say, 500kg +, a minimum of one biscuit per day will supply those needs (may need more). The smaller horse will manage on less, or you can add lucerne chaff into the hard feed mixed with wheat-en chaff (to slow him down). Also if you are not sure how much to feed and hopefully you have a fair idea of what your horse weighs, and if he is either at rest or in light work, he needs around 1.5 to 2% of his body weight in dry hay. The actual weight will depend on the horse as an individual and what you know of him. So, if he weighs 500kg, then that comes to between 7.5 and 10kg hay per day. Bales of hay differ in weight, so it is handy to weigh a biscuit out of each new bale. A set of ordinary kitchen scales will suffice. Place a light tray on top and weigh it. Then place a batt on top of that and subtract the weight of the tray to get your final weight. Finally, ensuring that he has access to some shelter out of wind and rain will help to reduce the chill factor and help him maintain his weight. Good luck for the coming cold months and keep vigilant!

Less munching and safe riding! Hamish.

CFS NEWS



With the cooler weather now giving way to the colder temperatures of an early Winter I'm sure that the fires are burning in most hearths now. I've already discussed the preparation that you should have undertaken to keep your chimney or flue clear and clean, to ensure that your fires are burning well and generating the most heat, as safely as possible.

Just because its been raining and cold outside doesn't mean that you may not be concerned about fire. Your woodpile can be a fuel hazard if you haven't kept your storage area clear of all the swarf and debris that is usually associated with firewood, like bark, twigs and chips. This debris can build

up and is probably very dry and well cured, so it pays to clear out your woodshed on a regular basis.



Keeping the house warm in Winter means keeping the drafts out as much as it is about keeping the warmth in. With solid fuel heaters (e.g. wood burning fires) a roaring fire can quickly consume most of the oxygen in a closed up room. Perhaps less so with a conventional open fire place, as an

open chimney will allow some external air to be drawn down and into the room, but its worth remembering that while the fire is keeping us warm it is also consuming a lot of oxygen, which can cause drowsiness. Logs and wood fires will often 'spit' embers and coals and if your fire is open and you have dozed off in front of it you may be unaware of a hot coal that has popped out on to your carpet or timber floor. Use a fire grill or grate to reduce the risk of embers or coals from spilling out of your fireplace this Winter and always make the fire safe before you head off to bed for the night.

Stay warm and stay safe.

Paul Heck, Cherry Gardens CFS Captain.

WWI soldiers honoured every Sunday

The Cherry Gardens Church has a memorial stained glass window (see below) honouring some of those from Cherry Gardens who died in ac-



tive service. The window is protected by a grant from the Department of Veteran Affairs program called 'Saluting their service to community commemorative grants monuments'. The important message is that these soldiers are honoured every Sunday and this has been happening for at least 80 years by a vase of white flowers being placed in the right hand corner of the window sill. Lest we forget

Margaret



Cherry Church Contacts:

Pastor:

Margaret Seyfang ph 0404 008 372

Chairperson Congregational Council:

Alan Dube ph 8270 3264

Pastoral Contact:

Prim Dube Ph 8270 3264

Want to find out more about our church? Visit our website:

www.cherrygardens.unitingchurchsa.org.au

MEADOWS VET

Recently Dr Meg Learey attended an update in Adelaide on Pre-Purchase examinations in horses. We have always highly recommended these examinations prior to purchasing a horse or pony as there is no doubt buying a horse can be a stressful and a high risk situation in which time, effort, money, emotions and expectations are involved. Whether you want to purchase a horse as a performance horse, breeding prospect, trail riding or paddock companion, you stand the best chance of getting one to meet your needs by first investing in a pre-purchase exam. This investment can save



you headaches, heartaches, money and provide you an opportunity to find the right horse to meet your needs and expectations. The expense of the pre-purchase exam will be small in comparison to the long term costs of keeping and caring for a horse especially if you end up with one with health problems! If you would like more information on pre-purchase exams please contact us.

With the cold weather really hitting us lately there is no doubt that Winter is on the way! One of the most common if not the most common condition we see in colder weather is Arthritis. Ar-

thrititis (osteoarthritis) basically means inflammation of the joints. Most of the joints in the body depend on a layer of cartilage acting as a cushion, which also provide a smooth surface so the adjoining bones can move freely over each other. This is assisted by the lubrication provided by the synovial fluid, the oily liquid in joints. With arthritis, the cartilage deteriorates and the synovial fluid loses some of its lubricating properties, so that the movement of the bones becomes less smooth.

Arthritis can affect one or more joints anywhere in the body however the most common joints affected are the shoulders, elbows, knees, and hips.

... continued p.6

CHERRY GARDENS IRONBANK RECREATION GROUND NEWS

The winter rains have come early at the recreation ground and unfortunately have coincided perfectly with football home games so we have some damage to the oval surface in the south-eastern pocket. With any luck a few clear days will see it dry out and the mud disappear.

Visitors to the recreation ground may have noticed improvements around the existing swings and new football club gym. Paving has been completed and soft fall woodchips have been spread underneath the swings. The swing pig tails have been repaired and the swings have been reopened. A big thank you to Crafers Garden Centre who have donated the soft fall and

some of the paving sand – a sign promoting their business is now located behind the swings. We also thank John and Rachael Rosman for donating the pavers.



Last month the footballers held a working bee to establish the remainder of the garden beds in the car park and lay the pavers around the swings. A big thank you to all the boys who turned out and to Chris McGowan

for keeping them fed. Over the course of the winter we should see the car-park completed.

Remember there is plenty of winter sport at the recreation ground with football every second Saturday, netball most Saturdays and some night tennis fixtures if you are interested in participating or just watching. If you are interested in hiring the oval, courts or clubrooms please contact our secretary Chris McGowan on 0417 128 796 or cgibrec@icloud.com

LOCAL SPORT NEWS

CGIB Football Club

Firstly, we'd like to thank the Cherry Gardens community for allowing us to pay our respects by taking part in the ANZAC Day ceremonies at the Cherry Gardens Hall. A moving service which was really well attended by the football & netball clubs.

On the park we've had some mixed fortunes, with the injury curse hitting our senior group making it hard to get any continuity in both teams. Our B Grade is competitive each week but poor kicking has left them winless at Round 5 however the A Grade have managed to notch up a couple of wins leaving them mid table in a very tight competition. With a few of the stars including Daniel Motlop to return in the coming weeks we're looking to add to that total.

The junior program is being led by the Under 15's who sit 3rd on the ladder and continue to impress each week. No superstars in the team, but contributions from every player leading to some great wins. Our Under 17s and 13s also recorded their first wins of the season against Torrens Valley.

A couple of things to mention;

- We're again running the Auskick program for Coromandel Primary on Saturday mornings at Hewett Oval in Blackwood. Although this started on May 9, it runs for 10 weeks and is never too late to join up. Head to the Auskick website and look up Coromandel PS to register and for more details.
- Our modified grades have started and we are always on the lookout for boys & girls wanting to have a kick and catch. Under 9's and Under 11's games are played on Friday nights. If you are interested please send us an email info@ironbankfootball.com.au
- Save the date – June 27th, 6:30pm @ Stirling Golf Club - we will be holding a huge Sports Panel Night with legends from Football, Netball & Cricket all joining us to share their stories & thoughts. We will have more info shortly so be sure to check out the website/Facebook for these.

Visit the website - www.ironbankfootball.com.au

Find us on Facebook – 'Ironbank Cherry Gardens Football Club'

Andy Adams

Netball

Ironbank Cherry Gardens Netball Club had their first round on Saturday May 2nd, with 14 wins over the day. It was wonderful to finally get teams on the court after so much organising behind the scenes and pre-season training.

This Saturday we will be wearing pink socks, shoelaces or ribbons to celebrate breast cancer awareness. All players will be donating a gold coin, and any other donations will certainly be appreciated.

We welcomed Nairne to our Courier League competition on Saturday, and they certainly gave us a workout. We ended up winning by just 1 goal. Congratulations to Jay Morgan for Courier best player.

It was wonderful to see so many local children participating both in the recent Anzac Day, and also the sports at the Rec Ground.

Di Morgan

President - IBCG Netball Club

HALL NEWS

Local State Member of Parliament Nat Cook, met with a small number of local residents at the Hall on Wednesday 22nd April. A number of topics were discussed, including the changes to the hospital system, speed limits, footpaths and the condition and maintenance of local roads.

Nat advised that about a dozen people had phoned here to apologise for not being able to attend, and discussed issues with her over the phone.

Nat can be contacted at her office if you have an issue you would like to discuss. Her office number is 8270 5122 or email fisher@parliament.sa.gov.au.

The Hall is again this year selling tickets in the People's Choice Community Lottery. Please contact me on 0433 656 803 if you would like to purchase tickets and I will arrange to get them to you. If you are able to take a book of 10 to sell to friends and relatives

that would be appreciated.

Alternatively you can buy online at www.communitylottery.com.au and nominate the Hall as the beneficiary. There are some great prizes and we will benefit from the full \$2 ticket purchase price for each ticket sold by us, or sold online where we are nominated.

Hall Committee Chair: Bill Semple

CHERRY GARDENS TABLE TENNIS CLUB

Teams play on Thursday nights commencing 7th May.

For more information regarding table tennis contact:-

Gwenda Frith - 82701116 or

Edie Brooks - 0407798418

The Cherry Gardens Table Tennis teams plays home matches at the hall and commenced on Thursday 7th May, playing the first match at home against Upper Sturt.

We have 2 teams, one in Division 3 and one in Division 4.

Results

7th May: Div. 3:

Cherry Gardens 7 - Upper Sturt 5

Div. 4:

Cherry Gardens 5 - Upper Sturt 7

14th May: Div. 3:

Cherry Gardens 6 (25) - Summertown 6 (21)

Div. 4:

Cherry Gardens 2 - Summertown 10

CHERRY GARDENS MEMORIAL HALL FOR HIRE

Available for hire for all functions, meetings & social occasions

Very reasonable rates

For bookings and more information phone 8270-2232

MINTION FARM

Minton Farm Animal Rescue Centre has run since 1992 as a free community service to assist native animals. Over the years the work the Centre has done with koalas has increased exponentially. Being such a unique and specialized species their care and rehab is often time consuming and intense. We aim to raise funds to assist the koala rehabilitation and the intensive care unit to buy medical equipment. This will be used to assess injuries to koalas, echidnas, birds, possums and more! With your help we can assess the viability of their rehabilitation and guarantee a successful outcome for released injured wildlife. What a blessing for 1,000's of creatures, which you have personally helped by your donation.

A lovely female kookaburra came in a couple of weeks ago unable to fly and being attacked by other birds. An x-ray showed there were no broken bones in her wing, but the bones had been pushed up toward the shoulder slightly. I strapped the wing to her body and removed it last week. Over the next few days she flew stronger every day so I took her back home today to Vicks Road, and sat her on a post in her home territory. She took off like a rocket and headed for the furthest gum tree. So good to see her have a full recovery when she was so battered on arrival!



A blue tongue lizard came into care with white blotches over its scales and its jaw rotting away. It was very thin and its eyes sunken and dull. After a few weeks of skin treatment, antibiotics, and eye ointment it is slowly improving in a huge heated vivarium donated by the Hub Library where Solomon the snake lived for many years. After treating him today when we put him back he actually started to eat enthusiastically for the first time ever!!! So good to see. Looks like we are winning the battle for him at last.

A week or so ago a sulphur-crested cockatoo came into our hospital with blood filled mouth and a badly damaged eye. It was treated with eye ointment and treated for shock and well fed. It was transferred to an outside aviary where it quietly went about its business without a word, sitting reservedly on a branch. It almost seemed domesticated until you entered the aviary and it flew erratically about the cage. Last weekend I noticed a lone Sulphur crest at the Blacks Road roundabout and realized it was his partner waiting for his return. I took him back to the same area and he quietly walked out of the cage, then took off strongly to a branch high up in a pine tree, screaming abuse at me all the way!!! Good vigour!

We are thrilled to announce the first tickets available online for the early bird buyers of the People's Choice Credit Union Community Lottery. 100% of sales by Minton Farm is returned to us. You can buy them online by visiting [https://](https://www.peopleschoicecu.com.au/minton-farm-animal-rescue-centre)

www.peopleschoicecu.com.au/minton-farm-animal-rescue-centre

Our work has continued for 23 years by the support of donors and volunteers. There is no funding for the work, but community goodwill has kept the Centre improving its facilities, equipment and free community service. Support like this has allowed for continual improvement of the rescues' treatments and a more successful rehabilitation. If you just can't contribute, that doesn't mean you can't help: you can donate goods to support the animals- The kangaroos and wombats need hay, chaff, goat meal, goat pellets, apples, carrots, corn, weetbix, rolled oats and muesli; The birds need small parrot mix or cockatiel seed; The possums need any tinned fruits and vegetables, fruit bars and sweet baby foods like apples, custards, yoghurts; and you can help to get the word out and make some noise about our campaign. Thank you so much. Bev. Langley
www.minton.org
mintonfarm@adam.com.au

MEADOWS VET (contd)

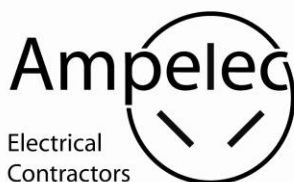
... from p.4

Signs of arthritis

Signs that may indicate your pet is suffering from arthritis.

- Reluctance to walk, climb stairs, jump or play
- Limping
- Lagging behind on walks
- Difficulty rising from a rest position
- Yelping in pain when touched
- A personality change
- Licking of the affected joints

These signs become more obvious as arthritis progresses, and the pain becomes much worse. As a result of the changes that have occurred in the affected joint/s, arthritis in dogs is not a condition that can be cured. But the pain and discomfort can be very effectively controlled and managed. Early detection and preventative management is very beneficial! Please speak with us if your pet is showing any of these signs.



- Domestic/ Commercial
- Pool's/ Spa's/ Sauna's
- Landscape lighting
- Outdoor entertaining
- 24 hours
- Agricultural



M: 0406 006 248
electrician@internode.on.net

Contact Ampelec
for your FREE estimate!



HORSE STABLES & SHEDS

- Extensions & Alterations.
- Steelwork.
- Repairs to: Roofs, Gutters, Stockyards.
- Site - Welding.
- Concrete Tank Roofs.
- Carports & Verandahs.

Lance Hart

Phone (08) 8388-3516 / FAX (08) 8388-3716

Mobile: 0411 551 750

LIC NO BLD: 165324

CHRIS'S GARDENING SERVICE

- * LANDSCAPING
- * PRUNING
- * TREE LOPPING
- * WEEDING
- * GUTTER CLEANING
- * LAWN MOWING
- * WHIPPER SNIPPING.
- * ESTABLISHING VEGETABLE GARDENS AND FRUIT TREES.
- * INSTALLING RAINWATER TANKS AND STORM WATER PIPES AND
- * FENCING RURAL AREAS

Phone: 0415 842 374

FREE FLOW PLUMBING

Commercial - Domestic - Events - Hospitality – Rural
Plumbing - Gas Fitting - Roofing & Guttering

*Commercial Fit Out * Complete Bathroom Renovations * Drain Cleaning (electric & jetting)
* Hot Water * Programmed Maintenance * Pumps
Rain & Mains Water Replacement & Repairs * Septic & Sewer Replacement*

Call Brett M: 0438 314 122 (24hrs/7days) or 8270 8766 (B/H)
Cherry Gardens Road, Cherry Gardens. BLD 211915 / PGE 7292



Wishart Jewellers
manufacturing jeweller

" ESTABLISHED 1953 "

QUALITY JEWELLERY MANUFACTURERS

Our Workshop is on Site.
Jewellery can be Handmade to your Specifications
By one of our 4 Qualified Craftsmen.

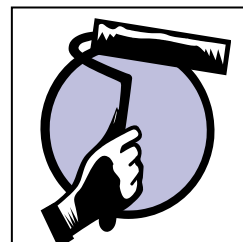
JEWELLERY REPAIRS and REMODELLING
ESTATE & ANTIQUE JEWELLERY BOUGHT & SOLD
INSURANCE VALUATIONS and QUOTATIONS
WATCH REPAIRS - Swiss and Japanese

We have been Servicing Country Clients for 3 Generations.
Come and see us at: 103 JETTY ROAD, GLENELG, SA.
(We are open 6 days a week)

Contact us: by Email: wishartjewellers@bigpond.com
Phone: (08) 8295 1345 Fax: (08) 8376 0160
www.wishartjewellers.com.au

David J O'Ryan

Painting & Decorating



Interior / Exterior Painting

Paper Hanging &
Stripping

Free quotes anytime

No job too big or small

Phone 8278-4364
Mobile 0415 347 329

djopainting@hotmail.com

Lic No BLD201369

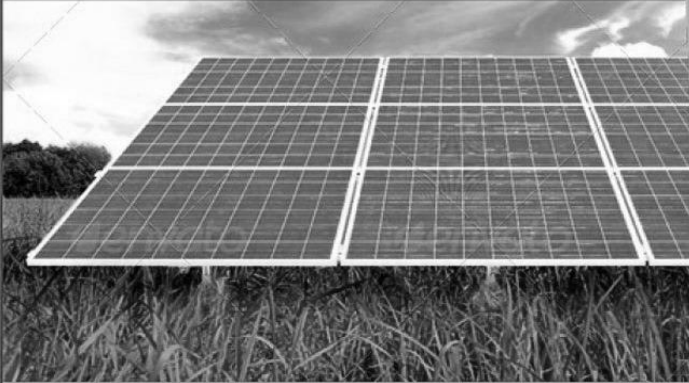
TIRED OF PAYING HIGH ENERGY PRICES?

PRODUCE AND STORE YOUR OWN ENERGY IN YOUR HOME OR BUSINESS!

GENERATE FREE electricity from **YOUR** solar system!

STORE excess **FREE** electricity generated
by your **SOLARSYSTEM** during the day!

USE your **FREE** stored electricity at night!



For more information call **1800 759 769**
or visit **www.braemacenergy.com.au**

Braemac Energy (SA) Pty Ltd
18 Regent Street | Melrose Park, SA 5039
T: 08 8275 0100 | F: 08 8275 0150

BRAEMAC
ENERGY

CONVEYANCER

PROPERTY SETTLEMENTS
LAND DIVISIONS
PRIVATE CONTRACTS
FAMILY TRANSFERS
COMMUNITY APPLICATIONS

**If you sell or transfer your property to another
owner**

Contact

JUNE HOSKIN

CONVEYANCER

Phone (08) 8221-5225

Mobile 0417 871 607

Use local business

BLACKWOOD HIRE

8370 2488

"Your Ultimate Toolbox!"

■ Trailers ■ Party Hire ■ Heavy Duty Lawnmowers
■ Garden Equipment ■ Mulchers ■ Lawn
Maintenance Equipment ■ Portable Toilets ■ Plate
Vibrators ■ Rollers ■ Concrete Mixers ■ Rotary
Hoes ■ Hole Diggers ■ Horse Floats ■ Dingo Mini
■ Diggers and much more.....

OPEN 7 DAYS

76 Main Rd, Blackwood. Ph: 8370-2488

GOING ON HOLIDAY?



**HAPPY
PETS**

*At home care for all you pets
– including horses.*

I visit your pet in it's own home

Ex - Veterinary Nurse

**Phone 8358-6560
or 0405 775 250**





Jamie BRIGGS MP

Fighting for our local community

www.jamiebriggs.com.au

(08) 8398 5566 | jamie.briggs.mp@aph.gov.au

Authorised by J Briggs, Shop 1/72 Gawler Street, Mount Barker SA 5251



www.neds.net.au

GIFT • HOME • DÉCOR

Proudly owned and operated by two
Cherry Gardens families



GRAIN & FODDER

Stock Feeds – Pet Food
POL Chooks – Grains & Seeds
Pea Straw – Lucerne Hay
Cereal Hay
Animal Health Products –
Rural Merchandise
Garden Products – Fertilisers
432 Main Rd, Coromandel
Valley

*Open 6 days
Closed
Mondays*

Ph. 08 8270 2173
Fax. 08 8270 6061



Council Enquiries 8384-0666

THALASSA WARD

Your Local Councillors

Cr Martin Bray : 8383 6207
Cr Brian Nankivell : 0409 301 151
Cr Darryl Parslow : 0408 847 293
Cr Marion Themeliotis : 0413 747 351



Lorraine Rosenberg
Mayor City of Onkaparinga
Continuing to work for Excellence
Connected with your community

Please contact me on any council matter

Office of the Mayor : 8384 0118
Mobile: 0458 141 091
Email: lrosenberg@onkaparinga.sa.gov.au



Trees For Life

Volunteer growers wanted



Join more than 1000 South Australians and grow local native seedlings for farmers and revegetation projects in your backyard this summer.

All materials and step-by-step guide provided, as well as on-going support.

(08) 8406 0500

www.treesforlife.org.au

STEVE BOWDEN

Outdoor Home Improvements

Builders Lic No. RL23784

- * Pergolas
- * Carports
- * Timber Decks
- * Verandahs



RMB 785 Ackland Hill Road,
CHERRY GARDENS SA 5157

Phone 8388-2018 or 0412 392 171

FACE PAINTING

- Parties
- Promotions
- Any special occasion
- For all ages



Phone Therese on...

8270-8275 or 0419 037 628



Kitchen Ideas

by Traditional Woodworks

Display: 113 Anzac Highway Ashford SA 5035

Workshop: 29 Chapman Rd. Hackham SA 5163

Ferdi Sasse Kitchen-Furniture Designer and Maker

Mobile: 0418 814 197 eml.ferdi@solution4u.com Fax: 08 8326 6362

ABN: 32 575 106 654 Bld: 214 261



kitchen ideas traditional woodworks

STEVENS & ANDREW

Certified Practising Accountants
Registered Company Auditors

Does your club, association, trust account or super fund need auditing?

Ironbank local Craig Stevens can assist. With more than 20 years experience in the accounting profession, we can help meet your audit compliance obligations.

Contact - Craig Stevens

Phone: 8392 8706

craigs@afscompliance.com.au

CARLING ELECTRICAL

Electrical
Contractors

M: 0404652862

carlingelectrical@gmail.com

www.carlingelectrical.com

- Domestic/Commercial
- Property Maintenance
- Outdoor Entertaining
- Landscape Lighting
- Pool/Spa/Sauna
- 24 Hours

WE'RE WHERE YOU ARE.

WE'RE YOUR LOCALS.

Celebrating 125 years



Harcourts™

SINCE 1888

BLACKWOOD

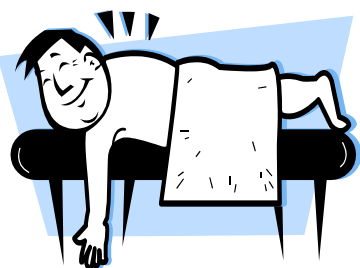
A MEMBER OF THE
HARCOURTS GROUP

Harcourts Blackwood

1/200 Main Road, Blackwood SA 5051

www.blackwood.harcourts.com.au

8278 4222



***Your Local
Massage
Therapist***

LAWRENCE MUZZATTI

(MEMBER ATMS, BAA, BTAA)

For Therapeutic Massage, Remedial Massage,
Shiatsu, Bowen Technique

Rebates for most Health Funds
Gift Vouchers available

Telephone 8270 -1206 Mobile 0408 011 206



**CHIMNEY and
FLUE CLEANING**

*Sweeping the Adelaide Hills, Eastern
and Southern Suburbs since 1982*

*"For safer and more efficient heating
with NO MESS ... NO FUSS"*

Jason Tait

0409 868 144

www.sweep.net.au



TRACKLOADER



TANDEM TIPPER HIRE



SKID STEER LOADER



EXCAVATOR

GENERAL EARTHMOVING AND EXCAVATION
STILL AVAILABLE FOR WORK IN THE CHERRY GARDENS AREA

- * House sites * Horse Arenas * Driveways * Tennis Courts
- * Tank and Shed Sites * Fire Tracks * Surplus Filling Removed

Neil Schubert – 8383-7387 or 0413 280 513

Lic. No. SR41157



Phone: (08) 8326-5333
Fax: (08) 8326-3962
Email: delco@bigpond.net.au

Antiques are our speciality

Absolute care is taken with your possessions - safe, reliable and secure.

A family operated business that takes pride and care in being committed to giving professional service at a most competitive price.

- Our professional trained team can assist you with a trouble free relocation.
- Household removals
- Local, country and interstate
- Office and commercial relocations
- Secure storage facilities

BRADBROOK CONSTRUCTIONS

YOUR LOCAL BUILDER
 LICENCE NO. GL121159
[M.B.A. Member]

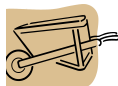
General Building, Pergolas & Verandahs, Heritage Restorations Alterations & Additions.

COMPETITIVE RATES

Phone Brian on 0419 828 209
563 Ackland Hill Rd, Coro East

RJS HOME & GARDEN

General maintenance
 & handyman jobs
 Woody weed control
 Proficient in most trades



Skills include: paving, tiling, painting, storm water and roofing repairs etc.

No job too small.

James Russell

Phone (08) 8388-2560
Mobile: 0430 208 860



peter alexandrou
0412 833 501

kristy dundon
0412 181 560

james leo
0408 408 009

we do things differently, call us today to find out why

harris real estate blackwood

187d main road blackwood

ph 8278 1322

14 228409

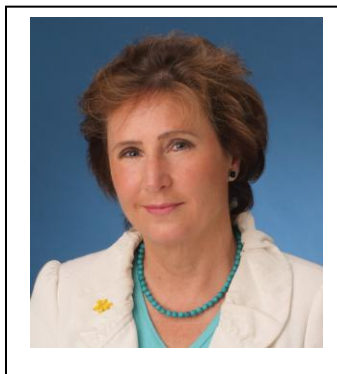
ISOBEL REDMOND MP

Member for Heysen

*If you have any local or State issues
 please contact my office*

10/14 Druids Ave Stirling 5152
Telephone: 8339 5077
Facsimile: 8339 6817

Email: heysen@parliament.sa.gov.au



Frith Automotive

**For all your
 Tyre & Battery needs**

Contact Peter Frith
Phone (08) 8388-2263
Mobile 0429 690 726

frithautomotive@bigpond.com

443 Frith Road
Corner of Mahar and Frith Roads,
CHERRY GARDENS SA 5157

JEFF BURTON

Vicks Road,
Cherry Gardens

PHONE: 8388-2268

Mobile:
0410 533 268



- Earthmoving
- Excavating
- Driveways
- Trenching
- Shed & Tank Sites
- Footings
- Soakage Trenches
- Stumps Removed

BACKHOE HIRE

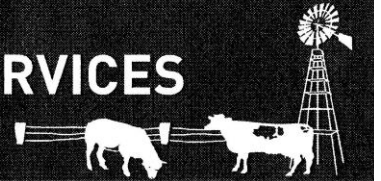


*'Proudly servicing the
Cherry Gardens Area'*

t: (08) 8370 2195 205 Main Road
f: (08) 8370 2954 Blackwood, SA 5051
t: blackwood@tyrepower.com.au
w: www.tyrepowerblackwood.com.au

REJUVENATE FENCING & AGRI SERVICES

PROPERTY MAINTENANCE



FENCING – New & Repairs
YARDS – Cattle, Horse & Sheep
WATER – Troughs, Tanks & Lines

**SERVICING
ALL
AREAS**

CONTACT GEOFF PHELPS 0429 876 071
rejuvenateagriservices@bigpond.com.au



**A nurturing
school
community
where
children
can learn
& grow**

Come and meet
Sue Zecchin, our principal
p: 8388 2251
dl.0396_info@schools.sa.edu.au

TIM SMILES

TREE CLIMBING

- Drop trees or trim
- Professional climber
- Fully insured
- Local to Hills
- Friendly & reliable

**Call Tim on
0423361704 or 73294426**
ABN:67358757113

**Emilis Prelgauskas
architect**

108 Cherry Gardens Road
0415 631 713
your property reviewed for
energy and water saving



Photography services - across the
**Adelaide Hills, Fleurieu Peninsula,
Kangaroo Island & South Australia**
individual & family portraits
events & celebrations, pets & livestock
commercial & private, landscape & real estate
wild-life & flora, vehicles & machinery

Obligation free quote **PhD Photography – 0410470309**
www.phdphotography.com.au – paulh@phdphotography.com.au



Dr Greg Rodda BVMS, BSc
Dr Roxanne Harvey BVetMed MRCVS
Dr James Roberts BVSc (Hons), BSc (Hons)

“Providing professional, friendly care to all creatures great and small”

Incorporating our “Woofs and Whiskers” pet grooming and “Meadows Mews” cat boarding.

Special interest in Equine Dentistry and Reproduction including Frozen & Chilled Artificial Insemination

Please visit our web site www.meadowsvet.com.au or
find us on Facebook www.facebook.com.au/MeadowsVetCentre
Email: admin@meadowsvet.com.au

2 Battunga Rd Meadows SA 5201 **PHONE 8388-3455**
24 HOUR EMERGENCY SERVICE AVAILABLE

BEEF FOR ONLY \$7.00/KG

¼, ½ or even a whole animal
Delivered free of charge
Labelled and packed 2-4 serves

**Grass fed cattle –
Hormone Free**

Beef on the Hoof

0457 307 848
beefonthehoof@bigpond.com



Complete hair & beauty treatments
in a comfortable friendly salon.
Make an appointment today and
pamper yourself.

175 Main Road, Blackwood. Ph: 8278 6844



Exclusive - Refer a Friend offer
Refer a friend who is new to our salon for
a colour and both of you will receive
a complimentary in salon treatment.

* PRESENT THIS ADV TO REDEEM THE OFFER *



Geoff Cook

Hoof trimming & Holistic Horse
Care

Coromandel East
Mob: 0422 445 855

**Rochelle's Nails
& Beauty**

Using only the best quality
products. Artistic Acrylic and Gel.
Fully certified nail technician.
Home based in Cherry Gardens

Rochelle Buckle
0409 500 032

**Sheoak
CAFE**



Open everyday
except public holidays

- great food and coffee
- fully licensed
- in-house functions
- catering
- dine-in or take home

38 Sheoak Road, Belair **Ph 8278 2946**
sheoakcafe@esc.net.au www.sheoakcafe.com.au



ABN 57 181 891 613

● LIGHT EARTHMOVING ● LANDSCAPE PREPARATION
● TRENCHING ● POST HOLES ● YARD CLEAN UP

Ph (Kym Bruce) on 0428 883 596



• VINTAGE • SHABBY CHIC • FRENCH PROVINCIAL • GIFTS & HOMEWARES



*Call in and browse for that
special item for yourself
or gift for someone special!*



Phone: 0427 181 901

Email: frenchwish@hotmail.com.au

Shop 3 / 278 Shepherds Hill Road, Eden Hills SA 5050

Like us on Facebook



Kruse Legal

Wills and Deceased Estates
Powers of Attorney & Guardianship
Advanced Medical Directives
Family & De-facto property settlements

Telephone 8278 1779

174 Main Road, Blackwood
www.kruselegal.com.au



Liability limited under a Scheme approved
under Professional Standards Legislation

- * Discounts for Pensioners & Community Volunteers
- * Home visits & after hours by arrangement
- * Locally owned & operated by a Cherry CFS member



**Design
& Print
Copy**

197 Main Road
Blackwood SA 5051
p 08 8370 3344
f 08 8370 2800
David@bcps.net.au



PARTY SHOP 24/7 (PREVIOUSLY THE PARTY SUPERSTORE BRIGHTON)

- Helium Balloons ▪ Themed Party Supplies
- Licensed Party Supplies ▪ Costume Accessories
- Corporate Events
- Coloured Disposable Tableware

We offer a Delivery Service

STORE LOCATION

449 Brighton Road, Brighton SA 5048 Phone: 8296-4999

OPEN 7 DAYS or shop online at www.partyshop247.com.au

Email: tania@partyshop247.com.au

“if we are not open in store we are open online”

Party with us 24/7 on Facebook and twitter – partyshop247aus

CHERRY GARDENS PLUMBING

Your Local Plumber



- * All Plumbing Work
- * Blocked Drains
- * Hot Water
- * Gas Fitting
- * Burst Pipes

**Phone Stephen Wood
On 8388-2028 or
Mobile 0419 807 611**

Lic. 1284

MOONS EARTHWORKS & FOUNDATIONS

SPECIALISING IN –

GENERAL EARTHWORKS, FOOTINGS & FOUNDATIONS, CONCRETING OF SHEDS AND DRIVEWAYS



TRACKED SKID STEER, BOBCAT, EXCAVATORS & TANDEM TIPPER



LOCAL TO CHERRY GARDENS AREA

PHONE SCOTT on 8270 – 8270

BLD232706

Vacancies



Learning Through Play

Kindy Sessions

(Full or half day)

Occasional Care

(3 months ~ 4 years)

Playgroup

(Birth ~ 5 years)

ABERFOYLE PARK

Taylor's Road Site Ph: 8270 2595

& Hub Drive Site Ph: 8370 6475

www.hubpre.sa.edu.au

Dependable Cabinetry

Fully Licensed and Insured Cabinet Maker

- ◆ Kitchens
- ◆ Laundry/Bathrooms
- ◆ Wardrobes
- ◆ Cupboards

New...Refurbishments...Repairs

Free Quotes

GREG BARTEL

Ph: 8370 8957 Mob: 0438 240 863

112 Upper Sturt Rd, Upper Sturt 5156

ABN 78152 180 496

LICENSED BLD 175 769

AQUARIUS

WINDOW CLEANING

- SHOPS
- OFFICES
- HOMES

LOCAL & RELIABLE

Phone GARY on:

**0438 693 104
or 8270-6038**

HANDY FRIDGE LIST

Architect – Emilis Prelgauskas – 0415 631 713
Backhoe Hire – Jeff Burton – 8388-2268 or 0410 533 268
Beef On The Hoof - 0457 307 848 beefonthehoof@bigpond.com
Bobcat, Excavator & Tipper Hire – Moons Earthworks – 8270-8270 or 0421 376 960
Builder – Bradbrook Constructions - 8388-2000
Cabinetry – Greg Bartel – 8370-8957 or 0438 240 863
Certified Practicing Accountants – Stevens & Andrew - Registered Company Auditors – 8392-8706
Cherry Chatter Advertising Rates – Email cherry chatter@yahoo.com for current rates
Chimney & Flue Cleaning – Hills Clean Sweep – Phone Jason Tait on 0409 868 144 www.sweep.net.au
Conveyancer – June Hoskin – 8221-5225 or 0417 871 607
Counselling – Ilona Potter 0407 398 231 Website www.esperancecounselling.com Blackwood
Earthmoving & Excavation – Neil Schubert – 8383-7387
Earthmoving (Light), Trenching, Post holes etc - Kym - Dig It Kanga Services - 0428 883 596
Electrician – Ampelec – 0406 006 248
Electrical Contractors - Carling Electrical - Mobile 0404 652 862 www.carlingelectrical.com
Equipment Hire – Blackwood Hire - 8370-2488
Face Painting – Therese – 8270-8275 or 0419 037 628
Feed, Seed & Fertiliser Supplies - Sandersons Grain & Fodder Ph 8270-2173 Fax 8270-6061
Fencing – Rejuvenate Fencing & Agri Services – Geoff Phelps – 0429 876 071
Furniture Removalists – Delco Removals – 8326-5333
Gardening, Landscaping, Handyman – Chris' Gardening Service 0415 842 374
Gifts & Homewares – French Wish – 0427 181 901 E: frenchwish@hotmail.com.au Eden Hills
Hairdresser - Ciba Hair & Beauty 175 Main Rd, Blackwood Phone 8278-6844
Hall for Hire – Cherry Gardens Memorial Hall – 8270-2232
Home Maintenance – RJS Home & Garden - James Russell – 8388-2560 or 0430 208 860
Horse Hoof Trimming & Holistic Care – Geoff Cook – Coromandel East. Phone - 0422 445 855
Jewellers – Wishart Jewellers – Phone:8295-1345 Fax:8376-0160 Email wishartjewellers@bigpond.com
Kitchen Ideas by Traditional Woodworks Phone: 0418 814 197 or email ferdi@solution4u.com.au
Lawyer - Kruse Legal – Call Darren on 8278 1779 www.kruselegal.com.au Free initial, no obligation appt
Local Councillors – See advertisement in newsletter
Massage Therapist – Lawrence Muzzatti – 8270-1206 or 0408 011 206
Mayor of Onkaparinga – Lorraine Rosenberg – 0458 141 091 lrosenberg@onkaparinga.sa.gov.au
Member of Parliament – Isobel Redmond - 8339 5077 Fax: 8339 6817
Member of Parliament - Jamie Briggs – 8398-5566 www.jamiebriggs.com.au
Nails & Beauty – Rochelle Buckle – Cherry Gardens Phone - 0403 500 032
NEDS – Variety Retailers - Visit www.neds.net.au for your nearest store.
Outdoor Home Improvements – Steve Bowden – 8388-2018 or 0412 392 171
Painter & Decorator - David J O’Ryan – 8278-4364 or 0415 347 329 davidoryan@msn.com
Party Shop 24/7 – Phone Brighton 8296-4999 www.partyshop247.com.au E: tania@partyshop247.com.au
Pet Care – Happy Pets - 8358-6560 or 0405 775 250
Photography Services – PhD Photography – Paul Heck 0410 470 309 www.phdphotography.com.au
Pre School – Aberfoyle Park – Hub Drive 8270-2595 or Taylors Rd 8370-6475 www.hubpre.sa.edu.au
Plumber - Stephen Wood - 8388-2028 or 0419 807 611
Plumbing – Free Flow Plumbing – 8270-8766 or 0438 314 122
Primary School – Scott Creek Primary – To contact the Principal, Sue phone 8388-2251
Printing – Black Cat Printing & Stationery – P 8370-3344 F 8370-2800 David@bcps.net.au
Real Estate – Harcourts – 8278-4222 or blackwood@harcourts.com.au www.blackwood.harcourts.com.au
Real Estate – Harris Real Estate – 8278-1322 or check out individual Agents mobile numbers
Solar Energy Systems – BRAEMAC - Mark – 8275-0100 0413 122 120 www.braemacenergy.com.au
Stables & Sheds – Lance Hart - 8388-3516 or 0411 551 750
Trees For Life – 8406-0500 www.treesforlife.org.au
Tree Removal – Tim Smiles Tree Climbing – 0423 361 704 or 7329-4426
Veterinary Clinic – Meadows Vet - 8388-3455 or email admin@meadowsvet.com.au
Window Cleaning – Aquarius – Gary – 0438 693 104 or 8270-6038