

Cherry Chatter



Incorporated by the Cherry Gardens Community Association Inc.

EDITORIAL

ANZAC Day

As most of you would be well aware 2015 is the 100 year anniversary of the ANZAC landing at Gallipoli. This was the first time since federation that Australians were to serve in a major military campaign. Dawn on the 25th of April 1915 was the beginning of World War One for Australia and by the time the war ended on the 11th of November 1918 over 60,000 soldiers had lost their lives out of the 331,781 who served overseas and another 137,000 were wounded, many of them seriously. Cherry Gardens was not spared the pain with at least 48 Cherry Garden's residents (or those that were born in Cherry Gardens) enlisting. 13 men paid the ultimate sacrifice during their service to our country. 3 of the Cherry Gardens soldiers served at Gallipoli and there was one woman that enlisted as a nurse and cared for soldiers that were wounded at Gallipoli and the Western Front. As a tribute to the memory of the fallen Cherry Gardens soldiers, thanks to the generosity of the Jacobs family who donated a portion of their land, the Soldiers Memorial Park was planted in 1923. For each soldier that paid the Supreme Sacrifice they planted a Golden Cypress tree to a background of many other deciduous and evergreen trees. In 1935 a Cross of Remembrance was erected amongst the Cypress trees. The names of all those that enlisted and died, from the district, in World War I are listed on an Honour Board in the Cherry Gardens Uniting Church. The World War II Cherry Gardens soldier's names are listed on an Honour Board in the Memorial Hall. I have been fortunate to be able to attend ANZAC Day services in a few different countries over the years and it is fitting to remember that services are held all over the world by Australians. Whenever I do



attend these services I always have in my mind standing amongst the Golden Cypress trees in Cherry Gardens listening to the Last Post as it echoes through the district. It is always an emotional experience that I strongly recommend to all other locals that they spend a little of their valuable time this ANZAC Day to remember these Australian Hero's from here in Cherry. The service this year will be held at 8.30am at the Soldiers Memorial Gardens and will be followed by breakfast at the Cherry Gardens memorial Hall. With this year being the 100 year anniversary we will be remembering all the Cherry Gardens residents that enlisted as well as those that did not return. We will also be dedicating a replica of the Honour Board that is in the Church at the Memorial Hall. We will also have 2 up this year and ANZAC biscuits. Hope to see you there.
Don

CONTENTS

Editorial
CC Meeting
Rainfall
Letters to the Editor
Community News
Justice of the Peace
Hall News
Birthdays
Over the Stable Door
CFS News
Church News
Garden Club
Welcome Pack
Local Sport News
Advertisers

RAINFALL REPORT

Rainfall for February 2015	1.6
Rainfall for February 2014	76.4
Average for February	29.4
Total end of February 2015	49.6
Total end of February 2014	98.0
Average end of February	57.3

CHERRY CHATTER COMMITTEE

Chair	Don Watton
Deputy Chair	Bill Semple
Editorial Team:	Don Watton, Paul Heck
Secretary	Bev Watton
Treasurer/Ads	Margaret Macks - pmcmacks@bigpond.net.au
Newsletter	Paul Heck 0410470309 Vicki Kirss 83882261
Postal Address:	409 Cherry Gardens Rd., Cherry Gardens SA 5157
CC email address:	cherrychatter@yahoo.com
Website:	http://cherrychatter.org.au

NEXT CC MEETING

Next meeting will be held on Wednesday April 8th at the Sim's
Articles to be received 5th of each month

PLEASE TAKE NOTE:-

Opinions and articles printed in the Cherry Chatter are not necessarily shared by all members of the Cherry Chatter Committee.

NOTE – The Cherry Chatter Committee will not approve any controversial article for publishing unless the name and address of the author is supplied.

JUSTICE OF THE PEACE

Cherry Gardens: Michael (Mike) Deare, Ph 83882185
648 Cherry Gardens Road
Coromandel East: Mrs. Vicki Hayman - Ph 83707883
Baldev Singh Dhaliwal - Ph 83705048, Mob 0411 113 331
Aberfoyle Park: SA MP Nat Cooke Office Mon, Wed, Fri - 11 to 12
2 to 4 only Phone Ph. 8270 1874
Blackwood: Darren of Kruse Legal - Ph 82781779

JP's work at no charge, so please **call first** to book an appointment

GARDEN CLUB

Meetings are held at the Uniting Church meeting room, 87 Hicks Hill Road Cherry Gardens at 7.30pm usually on the 2nd Monday of the month. Other excursions and garden visits occur on an ad-hoc basis.

Supper is provided and we have lucky door prizes. Visitors are most welcome.

Contacts are:- Ray 8383-6011 or Shirley 0403 801 916

April 2015 Cherry Gardens Garden Club

Our guest in February was well known ABC gardening personality Jon Lamb.

This was a very special and unique treat considering that he has not been out to garden clubs for nearly 10 years. Jon shared with us the implications for South Australian gardeners of climate change. Different pests, diseases and gardening methods will emerge.

He highlighted that when the temperature of the air is 40 degrees the ground temperature is 10 degrees higher and it drops 10 degrees each 15cm you go down under the ground. Plants prefer 32°C. He emphasised the benefits of mulch, deep watering less

often to encourage deep root growth and shared the secret of SA market gardeners - 50% shade cloth which can further decrease the ground temperature and reduce the rate of transpiration of plants. This all assists in preserving the shallower hair roots which will otherwise be burned off and die taking at least ten days to recover after the heat.

Elizabeth's dark almost black Hungarian Heart cherry tomatoes won the Tomato challenge.

April 13 meeting notification:

A group of four speakers from the Blackwood Action Group will tell us of their activities. Most noticeable is the beautification of the commercial area of Blackwood.

GEORGE'S GARDENING SUGGESTIONS

Pansies are great for Winter colour and you may be lucky and have them flower right through to late Spring, try the new spreading varieties which can cover up to 50 cm. They can be planted in pots and also hanging baskets. By the time you read this, your sweet peas should be up and growing well in the milder weather - watch out for snails and slugs as they love them!

LETTER TO THE EDITOR

I want to express my deep gratitude to the Cherry Gardens CFS, the SES, Veterinarian Rachel Westcott of Homecare Vet to Pet and Earthmover Extraordinaire Jeff Burton. These wonderful people responded recently when our steer (Harry Potter, 700kg+) became bogged in the mud

in the bottom dam.

After 5 hours he was freed and joined the rest of the herd, who all came running to make sure he was OK!

Thank you all once again. We sure live in a wonderful community.

Bill Semple

HAPPY BIRTHDAYS

APRIL

Bill Fox (1st)
Trevor Pillar
David Meister
Marie Anson
Brian Sims
Val Geue
Jason Chinner
Nicky Chinner
Cynthia Terrell
Melissa Whiteford
Kelsie Whiteford
Aisha Treloar

When we get some precipitation they will be on the move.

It will be time to plant Rhubarb crowns from next month so begin to prepare your patch now, digging in some well rotted manure or pelletised fertilizer as they are heavy feeders.

Some people love them and others hate them - Broad Beans- it's time to plant them, there is a variety with crimson flowers!

COMMUNITY NEWS

Remember to check out what's on at the Coromandel Community Centre by visiting their website:

www.communitywebs.org/Coromandel-CommunityCentre/

For information on Coromandel Valley history, events and more, go to:

www.coroalive.org.au, Trevor Conlon - Ph 8270-5686 or David Wyatt Ph 8270-4400

Dear Art and Craft Groups and organisations, could you please assist us in promoting our up coming Annual General meeting on April 15th at 2pm at the GP Plus Super Clinic at Noarlunga Centre.

Celebrate Seniors City of Onkaparinga Committee Inc runs the annual Seniors Art and Craft Exhibition each year in October. This exhibition is very important as it is the only dedicated seniors exhibition and has run annual for around 30 years.

Any assist you can provide would be greatly appreciated.

Regards

Helen Mikolaj

Exhibition Co-ordinator

Celebrate Seniors City of Onkaparinga Committee Inc

PO Box 502

Noarlunga Centre 5168

seniorsart@optusnet.com.au

08 8382 8721

OVER THE STABLE DOOR

Greetings Fellow Equines and Horse Owners! You may recall many moons and meals ago I mentioned training in hand. Just thought it might be helpful to revisit this area, as it is a mirror of what goes on under saddle. You will find that a horse which is sluggish to lead or runs away with you while leading will very likely display the same behaviour when being ridden. When he is sluggish, he is showing that he has become too habituated to the go signal (a tug) in hand or has become dead to the leg under saddle. This can come about when the pressure of the tug or the pressure of the leg aid has not been released at the exact moment of obedience. That is to say that the handler keeps tugging when the horse has already started walking forward, or the rider keeps nudging/squeezing once the horse has moved off. So now we have a horse which appears 'dead', lazy and uninterested. Actually he has just been taught the wrong response. To help motivate him a bit more and get him more 'on cue', go back to using just the whip (light taps only) in hand, touching him just at the girth. Two



taps to ask him to move forward, or increase the frequency (not the intensity) if he doesn't respond. At first, this may take 5 – 7 repetitions, with practice, this should reduce to 2 taps. Do 3 sets of 3 (light) repetitions. Be quick to reward him when he gets it right, with a verbal 'good boy' and a scratch at the wither (this lowers heart rate). Once this is reliably light and immediate, you can then use the tug followed by a whip tap. He will soon learn to associate the two and will move off from just the tug. Again when reliable, you can voice cue this by saying 'walk on', followed by the tug. Make sure you do not walk off first in case he takes your movement

as the cue for forward movement – that is not the point, as we don't want him to associate our moving around as a cue to move. Once leading you can test this by asking him to stop while you walk on another step or two. If he does, ask him to step back one step and repeat until he gets the message. Under saddle the same principle applies. Go back to just asking for the step off from just the whip alone. Again use the whip lightly just behind the girth, in the same area as you used in hand. If you have already practised this in hand, he will get the idea even quicker and you will soon have a horse which much more responsive and attentive to your signals. Doing this exercise also makes you more aware of what your horse is doing and improves your skills as a handler. The other side benefit is that it also improves the horse's welfare, as he will not be continually nagged from the leg or tugged by the rope. Hope this is of help...

Yours slimly, Hamish.

CFS NEWS



The end of the Fire Danger Period is almost within sight now, with warm to cool days and cooler to cold nights upon us. There has been really no rain to speak of and as a consequence the scrub is still tinder dry. This fire season has been another one in which we have been fairly lucky, in that we have not had any major fires in our own district. It has been a relief that the major fires have not impacted local residents, but as I pointed out previously our CFS Brigade provided much needed resources to the Sampson Flat fire, over an extended period. The Brigade has recommissioned all of the equipment that was used up or damaged during that fire and is again well and truly ready to respond to any emergency as needed. We do get a range of different and interesting jobs, as you will see if you take a look in the Letters to the Editor section.

The official announcement of the purchase and commissioning of the Sturt CFS Group Tanker has been published, as many of you will have seen from the various banners and local news articles and we expect to be able to possession of it by the end of May, all going to plan.

The Brigade has been hard at work ensuring that all the requirements to house the new fire-fighting resource are in hand and that the level of training and skills required for the new addition are also up to scratch, so while it's been relatively quiet, as far as emergency call-outs is concerned, we've been pretty busy with a whole bunch of other stuff.

We are planning a lot of station maintenance work, including looking at some better methods of hanging out turn-out gear, fitting a set of stainless steel sinks for the washing of Breathing Apparatus (BA) masks and putting in some better options and room for

members to get changed when putting on or taking off their turn-out gear, especially as we have a growing number of operational female members. We continue to be grateful for the on going generosity of the community with the support that you give us every time you drop off your empty refundable cans and bottles. It really does help us out and you can be assured that the funds that this provides us is solely dedicated to ensuring a better and more efficient emergency service to our community.

We are also getting very excited about the imminent arrival of the Sturt CFS Group Tanker, as it will be housed at the Cherry Gardens CFS fire station, which will mean that our engine truck bays will be fully occupied.

You can look forward to the Brigade hosting an event to formally accept this great asset into the station. We will keep you posted.

Paul Heck, Captain.

CHURCH NEWS

CHRISTIANITY and RABBITS!

Prior to 1770, pretty much everything in Australia was indigenous: the plants were Australian, the animals, the birds and the human beings. All the 'ferals' arrived with the white fellas. They brought the rabbits, cane toads, camels, starlings and sparrows, blackberries, Salvation Jane, capeweed, Elms and Dutch Elm disease, footrot, and prickly pear. People kept coming here from more than eighty different countries and with them came more pests and diseases. Measles and flu wiped out many people. And today, whenever you enter the country you have to "Declare it for Australia". Customs, or Biosecurity Australia, does a great job at the airports and sea ports. They take away your hiking boots and wash them in case there is weed seed in the soil. Artefacts are fumigated in case they contain the eggs or larvae of insects. They do a wonderful job. But the horse has already bolted.



The same thing happened to Christianity. It started with Christ 2000 years ago and his teaching was written down by his Apostles for everyone to read, for all time. But the "weeds" crept in, the ideas of many, many men. OK, even a few women, like Mary Baker Eddy, the founder of Christian Science. She added teaching on human health and nutrition. Other groups forbade blood transfusion. Some advocated polygamy. From the first Council of Nicaea and every Council since, every Papal encyclical or decree, and all the decisions of the religious bodies that have ensued, the Church that Jesus founded has become more and more the ideas of mankind. This has resulted in a large and confusing number of churches today, many calling themselves Christian churches, but all different.

To tell counterfeit Bank notes or forged works of art, you compare them with the original. If they are different in any way they are regarded as a fraud. With art and money, making copies is a crime. But people make changes to the original all the time with all the new versions of Christianity. If you want to find the genuine article, go back to the original. It's the only way to decide what is true Christianity. The Bible is often referred to as the Word of God. If it is the word of God then it is reliable. If it isn't, then it is just another History book or compilation of history books. It says itself that it is inspired by God. Inspired means "breathed into". That is how so many authors came up with the one coherent Bible that we have today.

Want to find out more about our church? Visit our website
www.cherrygardens.unitingchurchsa.org.au

Cherry Church Contacts

Pastor – Ph 8270-5812

Chairman Congregational Council Alan Dube Ph 8270-3264

Pastoral Contact Joan Button 8370-4947

JULIE SEMPLE

The Cherry Chatter committee and our community lost a dear friend recently. Julie Semple passed away peacefully in hospital.

Julie joined the Cherry Chatter team at the beginning of 2005 and gave of herself to this committee for 10 years as well as many years on the Hall committee and recently the CFS in the Comm's group. Julie was also dedicated to the Clarendon Agriculture Bureau. The committee and the Cherry Gardens community offers our deepest sympathy to Julie's family and most definitely to Bill, Julie's husband. Words cannot express the sadness we all feel in losing such a close and dear friend.

The recent bushfires in the Adelaide Hills took homes, fences, pastures, livestock and many trees. Trees are among mankind's best friends. They provide wood for buildings, shelter, a home for birds and animals, they are a source of industrial materials to manufacture goods like cardboard and paper and they beautify gardens and countryside. Children climb them and play in them. Tree lovers hug them. They have inspired artists like Hans Heysen and poets like Alfred Joyce Kilmer. He wrote this poem titled TREES.

I think that I shall never see
A poem lovely as a tree
A tree whose hungry mouth is prest
Against the earth's sweet flowing
breast
A tree that looks at God all day
And lifts her leafy arms to pray
A tree that may in Summer wear
A nest of robins in her hair
Upon whose bosom snow has lain
Who intimately lives with rain.
Poems are made by fools like me,
But only God can make a tree.

However we can all plant them and we are reminded often that they use up CO2 and give off life sustaining oxygen. Recently Margaret Bennett, who is a member of the local church and garden club, was recognised by Trees For Life with an award for more than 25 years service growing seedlings and aiding their re-vegetation programs. This Autumn we might all do our bit to recover from the bushfires by planting trees and enhancing the environment.

LOCAL SPORT NEWS

FOOTBALL NEWS

IBCG Football update

Football season is almost upon us, our cricketers are eyeing off a finals berth and we wish them all the best in their campaign for the top prize.

Our first Footy game is on April 11th against Onka' at Balhannah where we hope to get our season off to a flying start.

We have recruited well over the off season and the squad has been training hard since November.

We are pleased to advise that Andrew Jarman has signed again as Senior Coach for 2015 and we look forward to a successful year under his guidance.

Our Central Div 2 team will be coached again this year by Club stalwart Dan Axford with our Div 3 Premiership team of 2014 coached by James Haskett is looking to go back to back.

Round two will see us at home against traditional rivals Mt Lofty, the A grade game will be a night game with the Juniors kicking off at 11:30am and the A's starting at 5:30pm.

This promises to be an exciting game and a good crowd so if you are not busy, pop over and Cheer for the Thunderer's.

Round Three is again at home, against our neighbours Blackwood. The Anzac day clash with Blackwood has become a HFL fixture and our biggest minor round game of the year.

Once we have all payed our respects to our fallen diggers at Cherry Gardens Memorial Gardens at 8.30 followed by the breakfast at the hall, please join us at Ironbank Cherry Gardens Football Club for a great day of footy

The IBCGFC will again fill junior teams from U9s through to U17.5s with our U9s and U11s playing on Friday nights & Sat mornings and the U13's and Colts playing on Sat mornings before our seniors.

Our Junior coaching panel for the upcoming season is as follows:

U17.5s Adam Shearwood :Assistant Matt Smith

U15s Ben Dunbar :Assistant Darrin Baldock

U13s Glen Turner :Assistant Gary Campbell

U11s Craig Lidstone

U9s Scott McKenzie

There is a great deal of experience shared amongst the junior coaches this year so we are assured of some fantastic leadership for the boys. We are searching for players to top up Junior grades. Every grade needs 4-5 players with extra numbers needed in our U13s. If you have a boy or girl interested in trying Aussie Rules, now would be a great time to bring them out to the club!

Our junior director is John Rosman who can be contacted on 0412 637 205.

CHERRY GARDENS IN THE NEWS

Cyclone Pam widely devastated the country of Vanuatu. One family in Cherry Gardens was impacted as a result of their daughter being caught up in the aftermath. Ally Trueman was part of a group of volunteers on the island of Pentecost and had been there for around 2 months. Ally completed year 12 at Urrbrae last year and was on a six month placement with Lattitude Global Volunteers. Her family was unable to make contact with her for nearly one week however she made phone contact and reported that she was well. Ally was appealing for Australians to help the local residents on Pentecost Island. We wish Ally and her family well and are very happy to know that she is safe.

Netball News

IBCG netball wish to thank our major sponsor Mortgage Choice Adelaide Hills who have assisted in getting us into new style tunics this season.

Also to Waggon Wheels Blackwood who have again sponsored us, and SCF Group – bulk container specialists.

Our club continues to grow each year. We are so lucky to have fantastic volunteers, as well as players, coaches, umpires and sponsors.

Matches will commence Saturday 2nd May, and we hope to see lots of spectators out to cheer on our players.

HALL NEWS

Newly elected State Government member for Fisher, Nat Cook, has indicated that she would like to hold an information / feedback session at the Hall with local people. We are aiming for the 22 April, and will provide more information in the next edition of the Cherry Chatter.

We have had signage erected on the new Eastern wall of the Hall, to promote the Hall and provide a phone number for bookings. It is the Committee's hope that this will raise awareness of the Hall

CHERRY GARDENS MEMORIAL HALL FOR HIRE

Available for hire for all functions, meetings & social occasions
Very reasonable rates
For bookings and more information
phone 8270-2232



Cherry Gardens' Minton Farm Animal Rescue Centre crowd-funding a new rehabilitation centre

- by: AMELIA BROADSTOCK ENVIRONMENT REPORTER
- From: The Advertiser
- March 19, 2015 7:00PM

Minton Farm Animal Rescue Centre owner Bev Langley with injured animals — a ringtail possum, rainbow lorikeet, blue tongue lizards, and an Adelaide rosella. The Cherry Gardens centre is trying to raise \$15,000 to build a rehabilitation centre. Picture: Tait Schmaal. Source: News Corp Australia

WHEN a ringtail possum with a broken arm came to the Minton Farm Animal Rescue Centre, owner Bev Langley knew the little girl needed emergency treatment to save her.

Mrs Langley and her team amputated the broken arm and stopped an infection spreading further through the possum's body.

Without the centre's intensive care unit, the possum — and many other thousands of animals that have come through Mrs Langley's front gate — would not be alive to tell the tale.

But now the centre is the one who needs help.

The Cherry Gardens animal rescue centre is trying to raise \$15,000, in addition to \$15,000 already saved, to build a new animal rehabilitation centre at its site, buy medical equipment and update its hospital.

Mrs Langley, who has dedicated her life to rescuing native animals, is even selling her Toyota Hilux ute to help raise the money.

The new rehabilitation centre will free up the ICU and allow more animals into emergency care.

"Our ICU is chockers, we have so space which is why we need another facility up and going," Mrs Langley said.

"We see about 1000 animals each year and the whole idea of Minton Farm is to rescue, rehabilitate and release ... the new rehabilitation centre would go a long way towards helping us do that."

The not-for-profit, volunteer-operated organisation has been open since 1992 and in the past 23 years, the centre has rescued almost 10,000 animals.

Mrs Langley said her aim was also to improve biodiversity.

"With the work that we do, we are getting exactly where the animal comes from and we release it straight back to that place," she said.

"Everything we do is for the animals ... I love being able to help injured wildlife fulfil their destiny.

"At the end of the day, having a new rehabilitation centre is going to mean a

better outcome for thousands of animals."

Minton Farm operates solely on donations, volunteer input and community goodwill.

To donate to Minton Farm Animal Rescue Centre's crowd funding project for the rehabilitation centre visit igg.me/at/MintonFarm or visit www.mintonfarm.org for more details.

MOST BURNT TREES DON'T DESERVE THE CHOP

It may come as a surprise, but many of the native trees recently burnt in the Sampson Flat bushfires will in fact make a full recovery.

Eucalypts are well adapted to bushfires and only a small proportion will be weakened. In fact, many trees blackened in the fires are now re-sprouting with a vengeance.

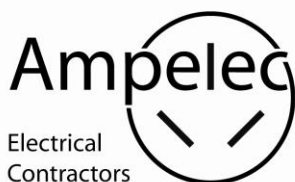
Regenerating eucalypts provide crucial habitat for wildlife, with older trees offering hollows to possums and birds to make nests. Birds and micro-bats which use these trees for shelter are an asset to landholders as they feed on insect pests, helping to keep numbers in check.

Many of these old hollow bearing trees have been here before, already surviving many fires in the past. So while some burnt trees may become unstable following fire, landholders should not assume that all of them pose a safety risk. If you're unsure, check to see if the inside of the tree and its branches have been burnt out. These are more susceptible to falling. Trees with a solid base and limbs are unlikely to fall.

If you have concerns about a tree near your house, a qualified arborist will be able to determine whether it poses a safety risk.

Natural Resources Adelaide and Mt Lofty Ranges has services and advice on helping your land recover from bushfires.

You can also call your local natural resources office at Gawler (08 8523 7700) or Lobethal (08 8389 5900).

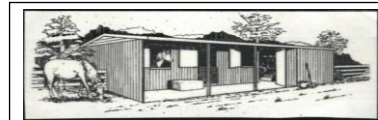


- Domestic/ Commercial
- Pool's/ Spa's/ Sauna's
- Landscape lighting
- Outdoor entertaining
- 24 hours
- Agricultural



M: 0406 006 248
electrician@internode.on.net

Contact Ampelec
for your FREE estimate!



HORSE STABLES & SHEDS

- Extensions & Alterations.
- Steelwork.
- Repairs to: Roofs, Gutters, Stockyards.
- Site - Welding.
- Concrete Tank Roofs.
- Carports & Verandahs.

Lance Hart

Phone (08) 8388-3516 / FAX (08) 8388-3716

Mobile: 0411 551 750

LIC NO BLD: 165324

CHRIS'S GARDENING SERVICE

- * LANDSCAPING
- * PRUNING
- * TREE LOPPING
- * WEEDING
- * GUTTER CLEANING
- * LAWN MOWING
- * WHIPPER SNIPPING.
- * ESTABLISHING VEGETABLE GARDENS AND FRUIT TREES.
- * INSTALLING RAINWATER TANKS AND STORM WATER PIPES AND
- * FENCING RURAL AREAS

Phone: 0415 842 374

FREE FLOW PLUMBING

Commercial - Domestic - Events - Hospitality – Rural
Plumbing - Gas Fitting - Roofing & Guttering

*Commercial Fit Out * Complete Bathroom Renovations * Drain Cleaning (electric & jetting)
* Hot Water * Programmed Maintenance * Pumps
Rain & Mains Water Replacement & Repairs * Septic & Sewer Replacement*

Call Brett M: 0438 314 122 (24hrs/7days) or 8270 8766 (B/H)
Cherry Gardens Road, Cherry Gardens. BLD 211915 / PGE 7292



Wishart Jewellers
manufacturing jeweller

" ESTABLISHED 1953 "

QUALITY JEWELLERY MANUFACTURERS

Our Workshop is on Site.
Jewellery can be Handmade to your Specifications
By one of our 4 Qualified Craftsmen.

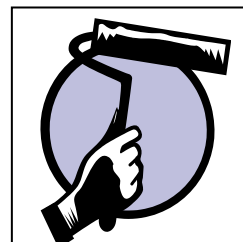
JEWELLERY REPAIRS and REMODELLING
ESTATE & ANTIQUE JEWELLERY BOUGHT & SOLD
INSURANCE VALUATIONS and QUOTATIONS
WATCH REPAIRS - Swiss and Japanese

We have been Servicing Country Clients for 3 Generations.
Come and see us at: 103 JETTY ROAD, GLENELG, SA.
(We are open 6 days a week)

Contact us: by Email: wishartjewellers@bigpond.com
Phone: (08) 8295 1345 Fax: (08) 8376 0160
www.wishartjewellers.com.au

David J O'Ryan

Painting & Decorating



Interior / Exterior Painting

Paper Hanging &
Stripping

Free quotes anytime

No job too big or small

Phone 8278-4364
Mobile 0415 347 329

djopainting@hotmail.com

Lic No BLD201369

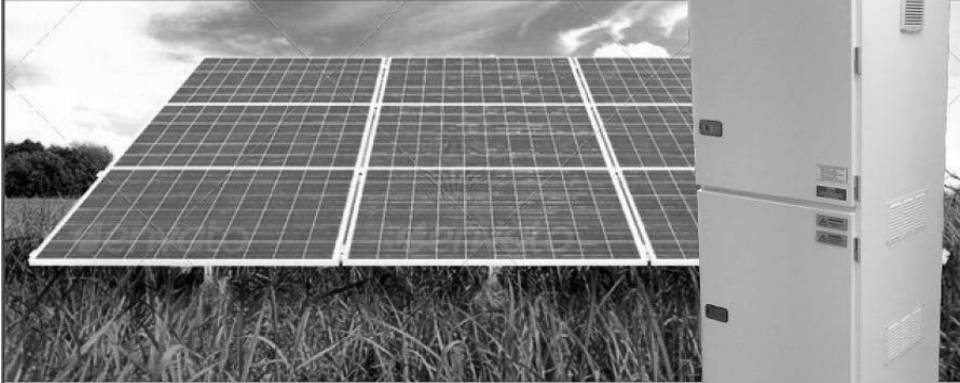
TIRED OF PAYING HIGH ENERGY PRICES?

PRODUCE AND STORE YOUR OWN ENERGY IN YOUR HOME OR BUSINESS!

GENERATE FREE electricity from **YOUR** solar system!

STORE excess **FREE** electricity generated
by your **SOLARSYSTEM** during the day!

USE your **FREE** stored electricity at night!



For more information call **1800 759 769**
or visit **www.braemacenergy.com.au**

Braemac Energy (SA) Pty Ltd
18 Regent Street | Melrose Park, SA 5039
T: 08 8275 0100 | F: 08 8275 0150

BRAEMAC
ENERGY

CONVEYANCER

PROPERTY SETTLEMENTS
LAND DIVISIONS
PRIVATE CONTRACTS
FAMILY TRANSFERS
COMMUNITY APPLICATIONS

**If you sell or transfer your property to another
owner**

Contact

JUNE HOSKIN

CONVEYANCER

Phone (08) 8221-5225

Mobile 0417 871 607

Use local business

BLACKWOOD HIRE

8370 2488

"Your Ultimate Toolbox!"

■ Trailers ■ Party Hire ■ Heavy Duty Lawnmowers
■ Garden Equipment ■ Mulchers ■ Lawn
Maintenance Equipment ■ Portable Toilets ■ Plate
Vibrators ■ Rollers ■ Concrete Mixers ■ Rotary
Hoes ■ Hole Diggers ■ Horse Floats ■ Dingo Mini
■ Diggers and much more.....

OPEN 7 DAYS

76 Main Rd, Blackwood. Ph: 8370-2488

GOING ON HOLIDAY?



**HAPPY
PETS**

*At home care for all you pets
– including horses.*

I visit your pet in it's own home

Ex - Veterinary Nurse

**Phone 8358-6560
or 0405 775 250**





Jamie BRIGGS MP

Fighting for our local community

www.jamiebriggs.com.au

(08) 8398 5566 | jamie.briggs.mp@aph.gov.au

Authorised by J Briggs, Shop 1/72 Gawler Street, Mount Barker SA 5251



www.neds.net.au

GIFT • HOME • DÉCOR

Proudly owned and operated by two
Cherry Gardens families



GRAIN & FODDER

Stock Feeds – Pet Food
POL Chooks – Grains & Seeds
Pea Straw – Lucerne Hay
Cereal Hay
Animal Health Products –
Rural Merchandise
Garden Products – Fertilisers
432 Main Rd, Coromandel
Valley

*Open 6 days
Closed
Mondays*

Ph. 08 8270 2173
Fax. 08 8270 6061



Council Enquiries 8384-0666

THALASSA WARD

Your Local Councillors

Cr Martin Bray : 8383 6207
Cr Brian Nankivell : 0409 301 151
Cr Darryl Parslow : 0408 847 293
Cr Marion Themeliotis : 0413 747 351



Lorraine Rosenberg
Mayor City of Onkaparinga
Continuing to work for Excellence
Connected with your community

Please contact me on any council matter

Office of the Mayor : 8384 0118
Mobile: 0458 141 091
Email: lrosenberg@onkaparinga.sa.gov.au



Trees For Life

Volunteer growers wanted



Join more than 1000 South Australians and grow local native seedlings for farmers and revegetation projects in your backyard this summer.

All materials and step-by-step guide provided, as well as on-going support.

(08) 8406 0500

www.treesforlife.org.au

STEVE BOWDEN

Outdoor Home Improvements

Builders Lic No. RL23784

- * Pergolas
- * Carports
- * Timber Decks
- * Verandahs



RMB 785 Ackland Hill Road,
CHERRY GARDENS SA 5157

Phone 8388-2018 or 0412 392 171

FACE PAINTING

- Parties
- Promotions
- Any special occasion
- For all ages



Phone Therese on...

8270-8275 or 0419 037 628



Kitchen Ideas

by Traditional Woodworks

Display: 113 Anzac Highway Ashford SA 5035

Workshop: 29 Chapman Rd. Hackham SA 5163

Ferdi Sasse Kitchen-Furniture Designer and Maker

Mobile: 0418 814 197 eml.ferdi@solution4u.com Fax: 08 8326 6362

ABN: 32 575 106 654 Bld: 214 261



kitchen ideas traditional woodworks

STEVENS & ANDREW

Certified Practising Accountants
Registered Company Auditors

Does your club, association, trust account or super fund need auditing?

Ironbank local Craig Stevens can assist. With more than 20 years experience in the accounting profession, we can help meet your audit compliance obligations.

Contact - Craig Stevens

Phone: 8392 8706

craigs@afscpliance.com.au



Electrical
Contractors

M: 0404652862

carlingelectrical@gmail.com

www.carlingelectrical.com

- Domestic/Commercial
- Property Maintenance
- Outdoor Entertaining
- Landscape Lighting
- Pool/Spa/Sauna
- 24 Hours

WE'RE WHERE YOU ARE.

WE'RE YOUR LOCALS.

Celebrating 125 years



Harcourts™

SINCE 1888

BLACKWOOD

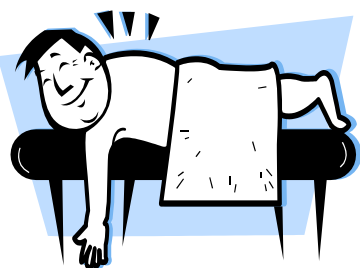
A MEMBER OF THE
HARCOURTS GROUP

Harcourts Blackwood

1/200 Main Road, Blackwood SA 5051

www.blackwood.harcourts.com.au

8278 4222



***Your Local
Massage
Therapist***

LAWRENCE MUZZATTI

(MEMBER ATMS, BAA, BTAA)

For Therapeutic Massage, Remedial Massage,
Shiatsu, Bowen Technique

Rebates for most Health Funds
Gift Vouchers available

Telephone 8270 -1206 Mobile 0408 011 206



**CHIMNEY and
FLUE CLEANING**

*Sweeping the Adelaide Hills, Eastern
and Southern Suburbs since 1982*

*"For safer and more efficient heating
with NO MESS ... NO FUSS"*

Jason Tait

0409 868 144

www.sweep.net.au



TRACKLOADER



TANDEM TIPPER HIRE



SKID STEER LOADER



EXCAVATOR

GENERAL EARTHMOVING AND EXCAVATION
STILL AVAILABLE FOR WORK IN THE CHERRY GARDENS AREA

- * House sites * Horse Arenas * Driveways * Tennis Courts
- * Tank and Shed Sites * Fire Tracks * Surplus Filling Removed

Neil Schubert – 8383-7387 or 0413 280 513

Lic. No. SR41157



Phone: (08) 8326-5333
Fax: (08) 8326-3962
Email: delco@bigpond.net.au

Antiques are our speciality

Absolute care is taken with your possessions - safe, reliable and secure.

A family operated business that takes pride and care in being committed to giving professional service at a most competitive price.

- Our professional trained team can assist you with a trouble free relocation.
- Household removals
- Local, country and interstate
- Office and commercial relocations
- Secure storage facilities

BRADBROOK CONSTRUCTIONS

YOUR LOCAL BUILDER
 LICENCE NO. GL121159
[M.B.A. Member]

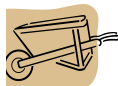
General Building, Pergolas & Verandahs, Heritage Restorations Alterations & Additions.

COMPETITIVE RATES

Phone Brian on 0419 828 209
563 Ackland Hill Rd, Coro East

RJS HOME & GARDEN

General maintenance
 & handyman jobs
 Woody weed control
 Proficient in most trades



Skills include: paving, tiling, painting, storm water and roofing repairs etc.

No job too small.

James Russell

Phone (08) 8388-2560
Mobile: 0430 208 860



peter alexandrou
0412 833 501

kristy dundon
0412 181 560

james leo
0408 408 009

we do things differently, call us today to find out why

harris real estate blackwood

187d main road blackwood

ph 8278 1322

14 228409

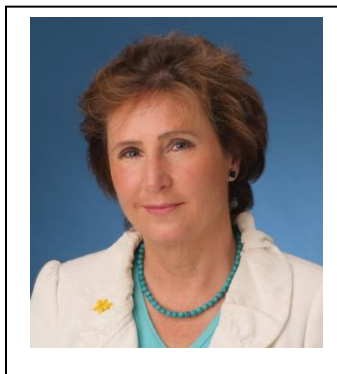
ISOBEL REDMOND MP

Member for Heysen

*If you have any local or State issues
 please contact my office*

10/14 Druids Ave Stirling 5152
 Telephone: 8339 5077
 Facsimile: 8339 6817

Email: heysen@parliament.sa.gov.au



Frith Automotive

**For all your
 Tyre & Battery needs**

Contact Peter Frith
 Phone (08) 8388-2263
 Mobile 0429 690 726

frithautomotive@bigpond.com

443 Frith Road
 Corner of Mahar and Frith Roads,
 CHERRY GARDENS SA 5157

JEFF BURTON

Vicks Road,
Cherry Gardens

PHONE: 8388-2268

Mobile:
0410 533 268



- Earthmoving
- Excavating
- Driveways
- Trenching
- Shed & Tank Sites
- Footings
- Soakage Trenches
- Stumps Removed

BACKHOE HIRE



*'Proudly servicing the
Cherry Gardens Area'*

t: (08) 8370 2195 205 Main Road
f: (08) 8370 2954 Blackwood, SA 5051
t: blackwood@tyrepower.com.au
w: www.tyrepowerblackwood.com.au

REJUVENATE FENCING & AGRI SERVICES

PROPERTY MAINTENANCE



FENCING – New & Repairs
YARDS – Cattle, Horse & Sheep
WATER – Troughs, Tanks & Lines

**SERVICING
ALL
AREAS**

CONTACT GEOFF PHELPS 0429 876 071
rejuvenateagriservices@bigpond.com.au



**A nurturing
school
community
where
children
can learn
& grow**

Come and meet
Sue Zecchin, our principal
p: 8388 2251
dl.0396_info@schools.sa.edu.au

TIM SMILES

TREE CLIMBING

- Drop trees or trim
- Professional climber
- Fully insured
- Local to Hills
- Friendly & reliable

Call Tim on
0423361704 or 73294426
ABN:67358757113

**Emilis Prelgauskas
architect**

108 Cherry Gardens Road

0415 631 713

your property reviewed for
energy and water saving



Photography services - across the
**Adelaide Hills, Fleurieu Peninsula,
Kangaroo Island & South Australia**
individual & family portraits
events & celebrations, pets & livestock
commercial & private, landscape & real estate
wild-life & flora, vehicles & machinery

Obligation free quote

PhD Photography – 0410470309

www.phdphotography.com.au – paulh@phdphotography.com.au



Dr Greg Rodda BVMS, BSc

Dr Roxanne Harvey BVetMed MRCVS

Dr James Roberts BVSc (Hons), BSc (Hons)

“Providing professional, friendly care to all creatures great and small”

Incorporating our “Woofs and Whiskers” pet grooming and “Meadows Mews” cat boarding.

Special interest in Equine Dentistry and Reproduction including Frozen & Chilled Artificial Insemination

Please visit our web site www.meadowsvet.com.au or
find us on Facebook www.facebook.com.au/MeadowsVetCentre
Email: admin@meadowsvet.com.au

2 Battunga Rd Meadows SA 5201 **PHONE 8388-3455**

24 HOUR EMERGENCY SERVICE AVAILABLE

BEEF FOR ONLY \$7.00/KG

¼, ½ or even a whole animal
Delivered free of charge
Labelled and packed 2-4 serves

**Grass fed cattle –
Hormone Free**

Beef on the Hoof

0457 307 848

beefonthehoof@bigpond.com



Complete hair & beauty treatments
in a comfortable friendly salon.
Make an appointment today and
pamper yourself.

175 Main Road, Blackwood. Ph: **8278 6844**



Exclusive - Refer a Friend offer
Refer a friend who is new to our salon for
a colour and both of you will receive
a complimentary in salon treatment.

* PRESENT THIS ADV TO REDEEM THE OFFER *



Geoff Cook

Hoof trimming & Holistic Horse
Care

Coromandel East

Mob: 0422 445 855

**Rochelle's Nails
& Beauty**

Using only the best quality
products. Artistic Acrylic and Gel.
Fully certified nail technician.
Home based in Cherry Gardens

Rochelle Buckle

0409 500 032

**Sheoak
CAFE**



Open everyday
except public holidays

- great food and coffee
- fully licensed
- in-house functions
- catering
- dine-in or take home

38 Sheoak Road, Belair **Ph 8278 2946**
sheoakcafe@esc.net.au www.sheoakcafe.com.au



ABN 57 181 891 613

● LIGHT EARTHMOVING ● LANDSCAPE PREPARATION
● TRENCHING ● POST HOLES ● YARD CLEAN UP

Ph (Kym Bruce) on 0428 883 596



• VINTAGE • SHABBY CHIC • FRENCH PROVINCIAL • GIFTS & HOMEWARES




*Call in and browse for that
special item for yourself
or gift for someone special!*



Phone: 0427 181 901

Email: frenchwish@hotmail.com.au

Shop 3 / 278 Shepherds Hill Road, Eden Hills SA 5050

Like us on Facebook 



Kruse Legal

Wills and Deceased Estates
Powers of Attorney & Guardianship
Advanced Medical Directives
Family & De-facto property settlements

Telephone 8278 1779

174 Main Road, Blackwood
www.kruselegal.com.au



Liability limited under a Scheme approved
under Professional Standards Legislation

- * Discounts for Pensioners & Community Volunteers
- * Home visits & after hours by arrangement
- * Locally owned & operated by a Cherry CFS member



**Design
& Print
Copy**

197 Main Road
Blackwood SA 5051
p 08 8370 3344
f 08 8370 2800
David@bcps.net.au



PARTY SHOP 24/7 (PREVIOUSLY THE PARTY SUPERSTORE BRIGHTON)

- Helium Balloons ▪ Themed Party Supplies
- Licensed Party Supplies ▪ Costume Accessories
- Corporate Events
- Coloured Disposable Tableware

We offer a Delivery Service

STORE LOCATION

449 Brighton Road, Brighton SA 5048 Phone: 8296-4999

OPEN 7 DAYS or shop online at www.partyshop247.com.au

Email: tania@partyshop247.com.au

"if we are not open in store we are open online"

Party with us 24/7 on Facebook and twitter – partyshop247aus

CHERRY GARDENS PLUMBING

Your Local Plumber



- * All Plumbing Work
- * Blocked Drains
- * Hot Water
- * Gas Fitting
- * Burst Pipes

**Phone Stephen Wood
On 8388-2028 or
Mobile 0419 807 611**

Lic. 1284

MOONS EARTHWORKS & FOUNDATIONS

SPECIALISING IN –

GENERAL EARTHWORKS, FOOTINGS & FOUNDATIONS, CONCRETING OF SHEDS AND DRIVEWAYS



TRACKED SKID STEER, BOBCAT, EXCAVATORS & TANDEM TIPPER



LOCAL TO CHERRY GARDENS AREA

PHONE SCOTT on 8270 – 8270

BLD232706

Vacancies



Learning Through Play

Kindy Sessions

(Full or half day)

Occasional Care

(3 months ~ 4 years)

Playgroup

(Birth ~ 5 years)

ABERFOYLE PARK

Taylors Road Site Ph: 8270 2595

& Hub Drive Site Ph: 8370 6475

www.hubpre.sa.edu.au

Dependable Cabinetry

Fully Licensed and Insured Cabinet Maker

- ◆ Kitchens
- ◆ Laundry/Bathrooms
- ◆ Wardrobes
- ◆ Cupboards

New...Refurbishments...Repairs

Free Quotes

GREG BARTEL

Ph: 8370 8957 Mob: 0438 240 863

112 Upper Sturt Rd, Upper Sturt 5156

ABN 78152 180 496

LICENSED BLD 175 769

AQUARIUS

WINDOW CLEANING

- SHOPS
- OFFICES
- HOMES

LOCAL & RELIABLE

Phone GARY on:

0438 693 104

or 8270-6038

HANDY FRIDGE LIST

Architect – Emilis Prelgauskas – 0415 631 713
Backhoe Hire – Jeff Burton – 8388-2268 or 0410 533 268
Beef On The Hoof - 0457 307 848 beefonthehoof@bigpond.com
Bobcat, Excavator & Tipper Hire – Moons Earthworks – 8270-8270 or 0421 376 960
Builder – Bradbrook Constructions - 8388-2000
Cabinetry – Greg Bartel – 8370-8957 or 0438 240 863
Certified Practicing Accountants – Stevens & Andrew - Registered Company Auditors – 8392-8706
Cherry Chatter Advertising Rates – Email cherry chatter@yahoo.com for current rates
Chimney & Flue Cleaning – Hills Clean Sweep – Phone Jason Tait on 0409 868 144 www.sweep.net.au
Conveyancer – June Hoskin – 8221-5225 or 0417 871 607
Counselling – Ilona Potter 0407 398 231 Website www.esperancecounselling.com Blackwood
Earthmoving & Excavation – Neil Schubert – 8383-7387
Earthmoving (Light), Trenching, Post holes etc - Kym - Dig It Kanga Services - 0428 883 596
Electrician – Ampelec – 0406 006 248
Electrical Contractors - Carling Electrical - Mobile 0404 652 862 www.carlingelectrical.com
Equipment Hire – Blackwood Hire - 8370-2488
Face Painting – Therese – 8270-8275 or 0419 037 628
Feed, Seed & Fertiliser Supplies - Sandersons Grain & Fodder Ph 8270-2173 Fax 8270-6061
Fencing – Rejuvenate Fencing & Agri Services – Geoff Phelps – 0429 876 071
Furniture Removalists – Delco Removals – 8326-5333
Gardening, Landscaping, Handyman – Chris' Gardening Service 0415 842 374
Gifts & Homewares – French Wish – 0427 181 901 E: frenchwish@hotmail.com.au Eden Hills
Hairdresser - Ciba Hair & Beauty 175 Main Rd, Blackwood Phone 8278-6844
Hall for Hire – Cherry Gardens Memorial Hall – 8270-2232
Home Maintenance – RJS Home & Garden - James Russell – 8388-2560 or 0430 208 860
Horse Hoof Trimming & Holistic Care – Geoff Cook – Coromandel East. Phone - 0422 445 855
Jewellers – Wishart Jewellers – Phone:8295-1345 Fax:8376-0160 Email wishartjewellers@bigpond.com
Kitchen Ideas by Traditional Woodworks Phone: 0418 814 197 or email ferdi@solution4u.com.au
Lawyer - Kruse Legal – Call Darren on 8278 1779 www.kruselegal.com.au Free initial, no obligation appt
Local Councillors – See advertisement in newsletter
Massage Therapist – Lawrence Muzzatti – 8270-1206 or 0408 011 206
Mayor of Onkaparinga – Lorraine Rosenberg – 0458 141 091 lrosenberg@onkaparinga.sa.gov.au
Member of Parliament – Isobel Redmond - 8339 5077 Fax: 8339 6817
Member of Parliament - Jamie Briggs – 8398-5566 www.jamiebriggs.com.au
Nails & Beauty – Rochelle Buckle – Cherry Gardens Phone - 0403 500 032
NEDS – Variety Retailers - Visit www.neds.net.au for your nearest store.
Outdoor Home Improvements – Steve Bowden – 8388-2018 or 0412 392 171
Painter & Decorator - David J O’Ryan – 8278-4364 or 0415 347 329 davidoryan@msn.com
Party Shop 24/7 – Phone Brighton 8296-4999 www.partyshop247.com.au E: tania@partyshop247.com.au
Pet Care – Happy Pets - 8358-6560 or 0405 775 250
Photography Services – PhD Photography – Paul Heck 0410 470 309 www.phdphotography.com.au
Pre School – Aberfoyle Park – Hub Drive 8270-2595 or Taylors Rd 8370-6475 www.hubpre.sa.edu.au
Plumber - Stephen Wood - 8388-2028 or 0419 807 611
Plumbing – Free Flow Plumbing – 8270-8766 or 0438 314 122
Primary School – Scott Creek Primary – To contact the Principal, Sue phone 8388-2251
Printing – Black Cat Printing & Stationery – P 8370-3344 F 8370-2800 David@bcps.net.au
Real Estate – Harcourts – 8278-4222 or blackwood@harcourts.com.au www.blackwood.harcourts.com.au
Real Estate – Harris Real Estate – 8278-1322 or check out individual Agents mobile numbers
Solar Energy Systems – BRAEMAC - Mark – 8275-0100 0413 122 120 www.braemacenergy.com.au
Stables & Sheds – Lance Hart - 8388-3516 or 0411 551 750
Trees For Life – 8406-0500 www.treesforlife.org.au
Tree Removal – Tim Smiles Tree Climbing – 0423 361 704 or 7329-4426
Veterinary Clinic – Meadows Vet - 8388-3455 or email admin@meadowsvet.com.au
Window Cleaning – Aquarius – Gary – 0438 693 104 or 8270-6038